

**TYPE – ‘B’**



**TAMIL NADU POLICE HOUSING CORPORATION LTD.,**

**Tender Documents**

**e - TENDERING**

**NON-PREQUALIFICATION TENDER**

Contains Pages : 4 Booklets

**(₹.50 Lakhs to ₹.100 Lakhs)**

**BOOKLET : 1**

**CONTAINS PAGES : (24 PAGES)**

**(TENDER NOTICE – INCLUDING THE  
INSTRUCTIONS TO THE TENDERER)**

**IMPORTANT INFORMATION TO THE TENDERERS FOR FILLING UP OF TENDER CODING SHEET INCLUDED IN THE TENDER SCHEDULE**

1. Rates should be quoted in the coding sheet enclosed in the tender schedule without fail.
- 2.1 This tender schedule includes (i) Booklet : 1 – Tender Notice, Booklet : 2 – Detailed tender specification (ie. Schedule 'A'), Booklet : 3 – Other terms & Conditions of the tender including drawings and Booklet : 4 - Tender Coding sheet (BoQ). In order to simplify the work and for early decision to be taken on the tender the quantities of items are given only in the tender coding sheet (BoQ). The contractors are requested to read the detailed specification and quote the rates clearly in the tender coding sheet (BoQ). Quoting the rates in the tender coding sheet (BoQ) for all the items will only be taken up for comparison and shall be final. The contractors need not quote the rates in the schedule containing detailed specification. Even if it is quoted in the schedule containing detailed specification, it will not be taken up for tender comparison.
- 2.2. The tenders invited are only for item war rates. Any lumpsum deductions or increase or rebate offered either in the tender or in the covering letter or at any portion of the tender will be ignored and only the rates offered in the tender coding sheet i.e. BoQ available in the Booklet – 4 alone will be taken as valid rates and taken up for tender comparison. Rates or Lumpsum amounts for items not called for shall not be included in the tender. Any alteration made by tenderer in the contract form, the conditions to Contract, the drawings, specification, or quantities accompanying the same will not be recognised and if any such alterations are made the tender will be void.
3. The tenderer / contractor will make his/her/their own arrangements to procure and use ISI Brand Cement and ISI Brand steel required for the work.
4. It should be clearly understood that the rate quoted by the tenderer / contractor is inclusive of the cost of 43 grade ordinary portland cement / SRC and steel and other incidental charges such as conveyance, loading, unloading, stacking at site and testing charges etc., complete.
5. The tenderer / contractor will produce test certificate obtained from any one of the Govt. institutions for cement and steel brought to site. As and when required by the Department the cement and steel brought to the site shall be tested by the Department from any one of the approved Govt. institutions and only when the test results confirm to the ISI specification they will be allowed to be used in the works.
6. The tenderer / Contractor should strictly follow above instructions without fail.

**ANNEXURE - [R]****TENDER DETAILS FOR THE WORK OF SPECIAL REPAIR WORKS TO THE MESS, ADMIN, NEW AND OLD BARRACKS BUILDING FOR IMPARTING BASIC TRAINING TO THE NEWLY RECRUITED PCS AT PERMANENT PRS NAVALPATTU IN TRICHY DISTRICT FOR THE YEAR 2023-2024**

1. FILE NUMBER : DB/SC/2214-A/2023
  2. TENDER NOTICE NUMBER : SE/SC/No:21/2023-2024 (1)
  3. NAME OF WORK : Special repair works to the Mess, Admin, New and Old Barracks building for Imparting Basic Training to the Newly Recruited PCs at Permanent PRS **NAVALPATTU** in Trichy District for the year 2023-2024
  4. APPROXIMATE VALUE PUT TO TENDER (PWD SR 2023-2024) : ₹.75.66 Lakhs + GST @18%
  5. a) DATE OF AVAILABILITY OF TENDER DOCUMENTS : 25.07.2023  
(From 12.00 Noon onwards)
  - b) DATE OF CLOSING OF AVAILABILITY OF TENDER : 01.08.2023  
(Upto 06.00 P.M)
  6. **DATE OF SUBMISSION OF TENDER**
    - a) START DATE & TIME : 25.07.2023  
(From 12.00 Noon onwards)
    - b) END DATE & TIME : 01.08.2023  
(Upto 06.00 P.M)
  7. DATE OF OPENING OF TENDER : 03.08.2023  
(at 11.15 AM)
  8. EMD AMOUNT (With GST) : ₹.54,700/-  
(Rupees fifty four thousand and seven hundred only)
- i) The Online payment Gateway has been enabled for TNPSC in TN Tenders Portal. (<https://tntenders.gov.in>) All the payments for the tenders like EMD will be carried out by the Bidders only through online payment mode.**
- ii) The EMD amount should be the exact amount and no excess or less amount should be transferred through online payment gateway. If excess or short, the tender status will be shown as invalid**
9. COST OF TENDER DOCUMENTS : FREE OF COST FOR THIS WORK
  10. TENDER PROCESSING FEE : ₹5,900/- including GST (Rupees five thousand and nine hundred only)  
**Refer Page No.6 Note-2**

The tender document for this work will be available in the website <http://tntenders.gov.in> and submit the tender documents through e-Tendering.

11. PERIOD OF COMPLETION OF WORK : 08 Months
12. TENDER INVITING AUTHORITY : The Superintending Engineer/South Circle  
TNPSC Ltd., New Natham Road,  
Madurai - 625 014.

**13. BOOK LET CONTAINING IN THIS TENDER SCHEDULE****TENDER DOCUMENTS**

<b>Booklet :1</b> (Tender Notice )	: 24 pages	} <b>PDF format</b>
<b>Booklet :2</b> (Detailed Tender Specification)	: 22 pages	
<b>Booklet :3</b> (Other terms & conditions of the tender including drawings)	: 34 pages	
<b>Booklet :4</b> <b>BoQ</b> (i.e. Tender Coding Sheets)	: 18 pages	
<b>Total</b>	<b>: 98 Pages</b>	<b>(Excel format)</b>

**LETTER OF CONSENT****e – Tendering**

1. I/we agree to abide by all the detailed specifications, terms and conditions stipulated by the Tamil Nadu Police Housing Corporation Ltd, which I/we have read and understood.
2. I/we certify that I/we have fully read and understood the instruction to bidders for Online bid submission given by Tamil Nadu Police Housing Corporation Ltd and any lapse to properly submit the bids result in rejection of the bid submitted.
3. I/we certify that the tender is offered without any alteration / addition / omission.
4. I/we certify that all the conditions of the tender are accepted.
5. I/we agree that the Tamil Nadu Police Housing Corporation Ltd is not responsible for any data corruption that might arise during the transmission / uploading of data in the website or due to disruption in communication error in my / our tender.
6. I/we agree that the Corporation has right to change schedule of opening or any Technical corrective action to resolve any error that might arise during the opening of the e-tender by Tamil Nadu Police Housing Corporation Ltd.
7. I/we certify that I/we responsible for the uploading of correct copies of scanned documents as per the e-tender procedure of Tamil Nadu Police Housing Corporation Ltd & I /we understand that any error in doing so my / our tender may be summarily rejected by Tamil Nadu Police Housing Corporation Ltd.
8. In the event of failure on my / our part to comply with all the requirements mentioned in this tender document I / we unconditionally agree that the department is at its liberty to reject my / our tender.

e-Tendering – **INSTRUCTIONS TO BIDDER** for online submission:-

1. The above tender notice is available on the website i) [www.tnphc.com](http://www.tnphc.com), ii) [www.tnpolice.gov.in](http://www.tnpolice.gov.in) and iii) <https://tntenders.gov.in>.
2. The intending bidder may visit <https://tntenders.gov.in>. Website & upload the tender documents on or before the due date and time as mentioned in the Annexure 'R'.
- a. The Bidders should download the documents which is digitally signed only from this website <https://tntenders.gov.in>
- b. The downloaded documents should be converted to word document and edited at suitable places for filling the required information like
  - i. Letter of consent.
  - ii. Letter of Application
  - iii. Coding sheet duly filling the rate for each item. (Available in the excel format in the tender schedule)
- c. Necessary download option for free software converting **.pdf** to **msword** format is available in the website itself.
3. The bidders are requested to digitally sign the Bid Document and convert them to **.pdf** format.
4. Bidders are requested to use the Digital Signature (e-token) for Registration for e-submission through the website <https://tntenders.gov.in>
5. Earnest Money Deposit (With GST)
  - i) The online payment gateway has been enabled for TNPHC in TN Tenders portal. ([www.tntenders.gov.in](http://www.tntenders.gov.in)) All the payments for the tenders like EMD will be carried out by the bidders only through online payment mode.
  - ii) The EMD amount should be the exact amount and no excess or less amount should be transferred through online payment gateway. If excess or short, the tender status will be shown as invalid.
6. The Scanned copies of the following list of documents are also to be uploaded by the Bidder at the time of submission of bids through the website by converting the documents to **.pdf** form
  - i. The other needed documents like Registration details, Experience Certificate (as mentioned in the Check list), Current Income tax certificate, GST Registration certificate and Revenue Solvency with Encumbrance certificate (as mentioned in the Check list) are to be uploaded.
  - iii. All the necessary documents mentioned above may be joined together and converted to **zip** files and uploaded as single file in the website
7. The Digital Signature Certificate / e-token may be obtained by the bidders individually at the risk and cost of the bidder.

## CHECK LIST FOR UPLOADING / ONLINE SUBMISSION

### 1. Earnest Money Deposit (with GST)

- i) The online payment Gateway has been enabled for TNPSC in TN Tenders portal (<https://tntenders.gov.in>). All the payments for the tenders like EMD will be carried out by the Bidders only through online payment mode.
- ii) The EMD amount should be the exact amount and no excess or less amount should be transferred through online payment gateway. If excess or short, the tender status will be shown as invalid

### 2. Scanned copy of the following credentials.

**i) Demand Draft (Tender processing fee) of Rs.5,900/- (including GST @ 18%) in the**

**name of respective Executive Engineers**

- ii) Copy of Registration as a contractor under appropriate class in PWD or TNPSC with upto date renewal. (i.e. registration should be valid on the date of tender).

iii) Experience certificate as specified in the tender documents in Sl.No.30 of Pages 10

iv) Current Income tax certificate (2022-2023)

v) GST Registration Certificate.

vi) **Revenue solvency issued by the Tahsildar with upto date EC should be uploaded. The details of Survey number, area etc., of the property mentioned in the solvency certificate and Encumbrance certificate should be tallied. Encumbrance certificate should be obtained from the date of solvency certificate issued by the Tahsildar, on or after the date of tender notice of the respective works. EC should be free from Encumbrance. EC obtained from the Government website shall be considered.**

vii) In case the tender is made by an individual, the tender documents shall be digitally signed by the individual with his name and address and submit along with a copy of (duly attested by Notary Public / Gazatted Officer) proper contractor registration certificate.

viii) In case the tender is made by registered firm, it shall be digitally signed by the Managing Partner (or) the person authorized by the firm, with full name of the firm and address. The proof shall be submitted along with the **copy of Registered partnership deed and current renewal for Firm registration i.e Form C obtained from Registrar of Firms with proof of renewal.** (Copies should be duly attested by Notary Public / Gazatted Officer).

ix) In case the tender is made by a limited company or a limited corporation, it shall be digitally signed by a duly authorized person holding the power of attorney for signing the tender in which case a certified copy of the power of attorney shall accompany the tender. The articles of Memorandum of the company and profile of the company with company incorporation certificate copies with seal (duly attested by Notary Public / Gazatted officer) shall be submitted along with his/her/their tender.

- x) In case a tenderer, tendered in the Name and Style of Proprietorship Concern the tenderer should have registered his firm name in the respective registrar office and enclose the copy of Proprietorship Deed (Duly attested by the Notary Public / Gazetted Officer) along with the tender. The sole proprietor alone should digitally sign in the tender document.
  - xi) All the copies of the credentials and particulars furnished by the tenderer should be duly attested by the Notary Public / Gazetted officer. Otherwise the tender shall be rejected as per the provisions of TT Act rule No.28 of 2000
4. Digitally signed and filled tender coding sheet (i.e. BoQ – in excel format – Booklet – 4) in addition to the digitally signed remaining three booklets in pdf format (totally 4 Booklets.)

**Note 1:** The tenderer should furnish the above documents mentioned in the check list for scrutiny and evaluation of the tender. Failure on the part of the tenderer to comply with the above requirements, the tender will be rejected.

**Note:2** Online tender processing fee of Rs.5,900/- (including GST @ 18%) for NPQ works to be remitted by the tenderers in the form of DD in the name of respective Executive Engineers and the same will be uploaded along with Tender documents which will not be refunded. Original Demand Draft should be handed over to the tender opening authority during opening of tender. Failure in submission of original Demand Draft, during opening of tender, the tender will be summarily rejected.



**THE FOLLOWING INSTRUCTIONS ARE TO BE CARRIED OUT FOR ONLINE  
SUBMISSION OF BIDS**

1. Bidder should get the registration in the tender site using the option available. Then The Digital Signature registration has to be done with the E-token, after logging into the site. The e-token may be obtained from any one of the authorised Certifying Authorities such as SIFY/TCS/nCode/SCS.
2. Bidder then login to the site through the secured log in by giving the password of the e-token & then the user id/password chosen during registration.
3. The e-token that is registered should be used by the bidder and should not be misused by others.
4. After downloading / getting the tender schedules, the Bidder should go through them Carefully and then submit the documents as asked, otherwise, the bid will be rejected.
5. Bidder should take into account of the corrigendum, upto the end date and time of submission of tender if any, published before submitting the bids online. Failure to note such corrigendum upto the end date and time of submission of tender is the responsibility of the bidder and department will not take any responsibility.
6. Bidder, in advance, should get ready the bid documents to be submitted as indicated in the tender schedule and they should be in pdf format. If there are more than one document, they can be clubbed together.
7. Earnest Money Deposit (with GST)
  - i. The online payment Gateway has been enabled for TNPHC in TN Tenders portal (**[www.tntenders.gov.in](http://www.tntenders.gov.in)**). All the payments for the tenders like EMD will be carried out by the Bidders only through online payment mode.
  - ii. The EMD amount should be the exact amount and no excess or less amount should be transferred through online payment gateway. If excess or short, the tender status will be shown as invalid.
8. The bidder should read the terms & conditions and abide by the same.
9. The bidder has to submit the tender document online well in advance before the Prescribed time to avoid any delay or problem during the submission process.
10. After the bid submission, the acknowledgement number given by the e-tendering System should be printed by the bidder and kept as record of evidence for online submission of bid for the particular tender.

11. Earnest Money Deposit (with GST)
  - i. The online payment Gateway has been enabled for TNPSC in TN Tenders portal (**www.tntenders.gov.in**). All the payments for the tenders like EMD will be carried out by the Bidders only through online payment mode.
  - ii. The EMD amount should be the exact amount and no excess or less amount should be transferred through online payment gateway. If excess or short, the tender status will be shown as invalid.
12. The Corporation will not be held responsible for any sort of delay or the difficulty faced in the submission of tenders through online by the bidders.
13. The bidder who participated in the tender, should submit the tender documents through e-tendering online system only.
14. The rates have to be entered in the specified place given in the Tender Coding Sheet (**BoQ.xls** file) and should be submitted as **BoQ.xls** file during the e-bid submission.
15. The tendering system will give a successful bid update message after uploading all the bid documents submitted & then a bid summary will be shown with the bid number & the date & time of submission of the bid with all other relevant details. The documents submitted by the bidders will be digitally signed with the E-token of the bidder and then submitted.
16. The bid summary has to be printed and kept as an acknowledgement as a token of The submission of the bid. The bid summary will act as a proof of bid submission for a tender floated and will also act as an entry point to participate in the bid opening date.
17. Bidder should log into the site well in advance for bid submission so that he submits the bid in time i.e., on or before the bid submission date & time. If there is any delay, due to other issues, bidder only is responsible.
18. Each document to be uploaded thro' online for the tenders should be less than 2 MB. If any document is more than 2 MB, it can be reduced thro' zip and the same can be uploaded. However, if the file size is less than 1 MB the transaction uploading time will be very fast.
19. The time settings fixed in the server side & displayed at the top of the tender site, will be valid for all actions of requesting, bid submission, bid opening etc., in the e-tender system. The bidders should follow this time during bid submission.

20. All the data being entered by the bidders would be encrypted using PKI encryption Techniques to secrecy of the data. The data entered will not viewable by unauthorized person during bid submission & not be viewable by any one until the time of bid opening. Overall, the submitted tender documents become readable only after the tender opening by the authorized individual.
21. The confidentiality of the bids is maintained since the secured Socket Layer 128 bit Encryption technology is used. Data storage encryption of sensitive fields is done.
22. The bidders are requested to furnish the tenders through e-tendering on line system to the tender inviting authority before the scheduled time as mentioned in the Annexure - R (as per Server System Clock).
23. Incase the tender is made by an individual, the tender documents shall be digitally signed by the individual with his name and address and submit along with a copy of (duly attested by Notary Public / Gazetted Officer) proper contractor registration certificate.
24. Incase the tender is made by registered firm, it shall be digitally signed by the Managing Partner (or) the person authorized by the firm, with full name of the firm and address. The proof shall be submitted along with the **copy of Registered partnership deed** and current renewal for Firm registration i.e Form C obtained from Registrar of Firms with proof of renewal. (Copies should be duly attested by Notary Public / Gazetted Officer).
25. Incase the tender is made by a limited company or a limited corporation, it shall be digitally signed by a duly authorized person holding the power of attorney for signing the tender in which case a certified copy of the power of attorney shall accompany the tender. The articles of Memorandum of the company and profile of the company with company incorporation certificate copies with seal (duly attested by Notary Public / Gazetted officer) shall be submitted along with his/her/their tender.
26. Incase a tenderer, tendered in the Name and Style of Proprietorship Concern the tenderer should have registered his firm name in the respective registrar office and enclose the copy of Proprietorship Deed (Duly attested by the Notary Public / Gazetted Officer) along with the tender. The sole proprietor alone should digitally sign in the tender document.

27. Earnest Money Deposit (with GST)
- The online payment Gateway has been enabled for TNPSC in TN Tenders portal (**[www.tntenders.gov.in](http://www.tntenders.gov.in)**). All the payments for the tenders like EMD will be carried out by the Bidders only through online payment mode.
  - The EMD amount should be the exact amount and no excess or less amount should be transferred through online payment gateway. If excess or short, the tender status will be shown as invalid.
28. **Revenue solvency issued by the Tahsildar with upto date EC should be uploaded. The details of Survey number, area etc., of the property mentioned in the solvency certificate and Encumbrance certificate should be tallied. Encumbrance certificate should be obtained from the date of solvency certificate issued by the Tahsildar, on or after the date of tender notice of the respective works. EC should be free from Encumbrance. EC obtained from the Government website shall be considered.**
29. Current Income tax certificate (2022-2023)
30. **The performance Certificate in having satisfactorily executed and completed building works / related works (The completed value including taxes / GST shall be more than 50% of the value of the contract put to tender [with GST] in a single contract) directly issued by the concerned organization during past five years. (i.e. the works executed under sub-contract will not be considered for this purpose). The evidence for the same should be produced from an officer not less than the rank of the Superintending Engineer or equivalent rank [(ie) Agreement executing authority] of the Government or Government undertakings /responsible person of the Private organizations**
- The Private experience should be supported along with TDS statement (ie Form 16A & Form 26AS)**

**In case, the contractors who have executed works in TNPSC Ltd., the satisfactory performance certificate in the prescribed format from the Superintending Engineer concerned of TNPSC Ltd., should be furnished Credentials of the tenderer(s) for the works executed by him / them in the past 5 years supported by certificates issued by the authority not lower than the rank of Superintending Engineer should be furnished. The date of completion of the works stated in the experience certificate should be within the past 5 years prior to the date of tender.**

31. The tenderer should furnish the Experience certificate with the details of Name of Work, Name of contractor, Date of Commencement of Work, Due date of Completion, Actual date of completion, Actual completion cost, fine imposed if any and reason for delayed completion of work with extension of time details.

**TAMIL NADU POLICE HOUSING CORPORATION LIMITED**  
**TENDER NOTICE**  
**e-Tendering**

**Office of the Superintending Engineer/South Circle., Tamil Nadu Police Housing Corporation Limited.**

For and on behalf of the TNPdC Ltd e-tender is invited for the under mentioned work so as to reach the Superintending Engineer/ South Circle, Tamil Nadu Police Housing Corporation Limited, Madurai-14 not later than the date and time mentioned in the Annexure – 'R' (Serial No. 5(b)). The tenders will be opened through online by the Superintending Engineer/South Circle, Tamil Nadu Police Housing Corporation Limited, at his office on the date and time mentioned in the Annexure – 'R' (Serial No.7) in the presence of the tenderers or their authorised representative, who are present at opening time for the work of \*

**Special repair works to the Mess, Admin, New and Old Barracks building for Imparting Basic Training to the Newly Recruited PCs at Permanent PRS NAVALPATTU in Trichy District for the year 2023-2024**

The tender should be in the prescribed form available in the website [www.http://tntenders.gov.in](http://tntenders.gov.in)

1. The tenderers or their agents should be present at the time of opening of tenders.
2. Incase the tender is made by an individual, the tender documents shall be digitally signed by the individual with his name and address and submit along with a copy of (duly attested by Notary Public / Gazetted Officer) proper contractor registration certificate.
3. Incase the tender is made by registered firm, it shall be digitally signed by the Managing Partner (or) the person authorized by the firm, with full name of the firm and address. The proof shall be submitted along with the **copy of Registered partnership deed** and current renewal for Firm registration i.e Form C obtained from Registrar of Firms with proof of renewal. (Copies should be duly attested by Notary Public / Gazetted Officer).
4. Incase the tender is made by a limited company or a limited corporation, it shall be digitally signed by a duly authorized person holding the power of attorney for signing the tender in which case a certified copy of the power of attorney shall accompany the tender. The articles of Memorandum of the company and profile of the company with company incorporation certificate copies with seal (duly attested by Notary Public / Gazetted officer) shall be submitted along with his/her/their tender.

5. Incase a tenderer, tendered in the Name and Style of Proprietorship Concern the tenderer should have registered his firm name in the respective registrar office and enclose the copy of Proprietorship Deed (Duly attested by the Notary Public / Gazetted Officer) along with the tender. The sole proprietor alone should digitally sign in the tender document
6. Each tenderer must also send a certificate of the latest Income-tax return acknowledgement in the form prescribed therefor.

All tenders received without certificate as aforementioned will be summarily rejected.

7. + Each tenderer must pay as Earnest Money deposit (with GST) of a sum of  
**₹.54,700/- (Refer Annexure "R" Serial No.8) (Rupees fifty four thousand and seven hundred only)**

- i) **The Online payment Gateway has been enabled for TNPHC in TN Tenders Portal. ([www.tntenders.gov.in](http://www.tntenders.gov.in)) All the payments for the tenders like EMD will be carried out by the Bidders only through online payment mode.**
- ii) **The EMD amount should be the exact amount and no excess or less amount should be transferred through online payment gateway. If excess or short, the tender status will be shown as invalid**

The Earnest Money deposit (with GST) will be retained in the case of successful tenderer and will not carry any interest. It will be dealt with as provided for in the tender.

**\* Special repair works to the Mess, Admin, New and Old Barracks building for Imparting Basic Training to the Newly Recruited PCs at Permanent PRS NAVALPATTU in Trichy District for the year 2023-2024**

8. The tender will remain valid for a period of 180 days from the last date for receipt of tender. The validity period can be extended further if the contractor gives his consent in writing, specifying the period of extension.

- (i). The tenderer whose tender is under consideration shall attend the office before the end of the period specified by written intimation to him. If the tenderer fails to attend the office before the end of specified period, his/her/their tender will not be considered. He shall forthwith, upon and intimation being given to him of acceptance of his tender by the officer authorized, make security deposit (with GST) of 2% of the value of contract in one of the forms prescribed in TNPSC by taking into account of the amount of earnest money deposit (with GST) already deposited with the tender, it would be sufficient to pay the balance amount to make up the two percent of the value of contract for the purpose of security deposit (with GST) which has to be remitted only in the shape of deposit by means of Demand Draft / Banker's cheque from any one of the Nationalized Bank / Scheduled Bank in favour of Executive Engineer concerned / NSC/KVP (and other small savings scripts issued by the Government) and the same should be pledged infavour of the respective Executive Engineers. The security deposit together with the earnest money deposit and the deductions made at 5% of the value of each bill towards withheld amount vide clause 64-1 of General condition to the contract, shall be retained as security for the due fulfillment of contract such deposit shall not bear any interest.
- (ii). On receipt of written communication of acceptance of tender if the tenderer fails to pay the requisite security deposit(with GST) within the period specified in the written communication or backs out from the tender or withdraws his tender, the earnest money deposit (with GST) shall be forfeited. If the contractor fails to carryout the contract, after paying the requisite deposits, then he will be liable for the excess expenditure, if any incurred to complete the work as contemplated in the General conditions to the contract.



- (iii). It shall be expressly understood by the tenderer, that on receipt of written communication of acceptance of tender from the accepting authority, there emerges a valid contract between the TNPHC and the tenderer for execution of the work without any separate written agreement. Hence for this purpose, the tender documents i.e., tender notice, tender offered by the contractor, General conditions to the contract, special conditions to the contract, negotiation, correspondences, written communication of acceptance of tender, etc., shall constitute a valid contract and that will be the foundation of the rights of both the parties to the contract. Provided that, it shall be open to the accepting authority to insist execution of any written agreement by the tenderer, if administratively considered necessary or expedient.
9. The tenderer shall examine closely the general conditions to the contract of Tamil Nadu Building Practice and also general conditions to contract contained therein and sign the copy of the Tamil Nadu Building Practice and its addenda volume in token such study before submitting his tender unit rates which shall be for finished work in site. He shall also carefully study the drawings and additional specifications and all the documents connected with the contract. The Tamil Nadu Building Practice and other documents connected with the contract such as specifications, plans, descriptive specification sheet regarding materials etc., can be seen at any time between 11.00 a.m to 5.00 p.m. on office days in the office of the Superintending Engineer aforementioned.
10. The tenderer's attention is directed to the requirements for materials under the clause "Materials and Workmanship" in the General conditions to contract. Materials confirming to the Indian Standard Specifications shall be used on the work and the tenderer shall quote his rates accordingly.
11. Every tenderer is expected, before quoting his rates, to inspect the site of proposed work. He should also inspect quarries, and satisfy himself about the quality and availability of materials such as Bricks, Sand & HBS jelly etc. The best class of materials shall be allowed to use on the work. In every case the materials must comply with the relevant standard specifications. Samples of materials called for in standard specifications, or in this tender notice or as required by the Executive Engineer in any case shall be submitted for the Executive Engineer's approval before the supply to the site of work is begun. Accordingly the tenderers are requested to quote their own workable rates.

The Tamil Nadu Police Housing Corporation Limited will not however after acceptance of contract rate pay any extra charges for lead or for any other reasons in case the contractor is found later on to have misjudged the materials available. Attention of the contractor is drawn to the General conditions to the contract regarding payment of seignior ages, tolls etc., subject to price adjustment clause provided for in this tender schedule.

12. The Tenderer's particular attention is drawn to sections and clauses in the General Conditions to contract dealing with:
- a) Test, inspection and rejection of defective materials and work
  - b) Carriage
  - c) Construction plant
  - d) Water and Lighting
  - e) **Mechanized Cleaning up during progress and for delivery**
  - f) Accidents
  - g) Delays and
  - h) Particulars of Payment

The contractor should closely peruse all the specification clauses which govern the rate he is tendering.

13. A schedule of quantities accompanies this tender notice, it shall be definitely understood that the Executive Engineer, aforementioned does not accept any responsibility for the correctness or completeness of this schedule and that this schedule is liable to alterations, omission, deductions or additions at the discretion of the Executive Engineer, Tamil Nadu Police Housing Corporation or as set forth in the conditions to contract. The Tenderer will however base his lump-sum tender on this schedule of quantities. He should quote specific rates for each item in the schedule and the rate should be in Rupees and Paise in two decimal only
14. The tenders invited are only for item war rates. Any lumpsum deductions or increase or rebate offered either in the tender or in the covering letter or at any portion of the tender will be ignored and only the rates offered in the tender coding sheet i.e. BoQ available in the Booklet – 4 alone will be taken as valid rates and taken up for tender comparison. Rates or Lumpsum amounts for items not called for shall not be included in the tender. No alteration which is made by tenderer in the contract form, the conditions to Contract, the drawings, specification, or quantities accompanying same will be recognised and if any such alterations are made the tender will be void.

15. The tenderer should work out his own rates without reference being made to the Tamil Nadu Police Housing Corporation Limited current schedule of rates or to the estimated rates which are not open for inspection to tenderers.
16. The attention of the tenderer is directed to the contract requirements as to the time of beginning work, the rates of progress and the dates for the completion of the whole work and its several parts. The following rate of progress and of proportionate value of work done from time to time as will be indicated by the Executive Engineer's certificates of the value of work done will be required. Date of commencement of this programme will be the date on which the site (or premises) is handed over to the contractor.

Period of Contract : 08 Months

	Period after date of commencement	Percentage of work complete (Based on Contract Lumpsum amount)
Refer Annexure "R" Serial NO.10	1 <sup>st</sup> month	15% of whole work
	2 <sup>nd</sup> month	30% of whole work
	3 <sup>rd</sup> month	45% of whole work
	4 <sup>th</sup> month	60% of whole work
	5 <sup>th</sup> month	70% of whole work
	6 <sup>th</sup> month	80% of whole work
	7 <sup>th</sup> month	90% of whole work
	8 <sup>th</sup> month	100% of whole work

**NOTE :** The periods to be entered in column for the purpose of defining of the rate of progress may be fixed by the Superintending Engineer / Executive Engineer to suit each case.

17. No parts of the contract shall be sublet without written permission of the Executive Engineer, nor shall transfer be made up power of attorney, authorising others to receive payment on the contractors behalf.
18. If further necessary information is required the "Superintending Engineer" of the Tamil Nadu Police Housing Corporation Limited will furnish, details but it must be clearly understood that tenders must be received in order, and according to instructions.

19. The Superintending Engineer, or other sanctioning authority reserves the right to reject any tender or all the tenders without assigning any reasons therefor.
20. The tenderers who are themselves not professionally qualified shall undertake to employ qualified Technical men at their cost to look after work. The tenderer should therefore state in clear terms whether they are professionally qualified or whether they undertake to employ technical staff and if so give their professional qualifications of the staff to be employed. In case the selected tenderer is one who has undertaken to employ technical staff under him he should see that one of the staff is always at site of the work during working hours personally checking all items of work and paying extra attention to such works as may demand special attention eg. reinforced concrete works etc.
21. Tenderer submitting a tender which the tender accepting authority considers excessive and / or indicative of the insufficient knowledge of current prices or definite attempt at profiting will render himself liable to be debarred permanently from tendering or for such period as the tender accepting authority may decide.
22. The fact of submitting the tender implies that the tenderer have actually inspected the site of works and have examined before tendering the nature and extent of various kinds of soil at various depths and have based on their tenders on such examination by them and no future representation in this regard will be considered.
23. A statement giving particulars of equipment and resources that will be put at the disposal of the work under the following classification should accompany the tender.
  - (a) Equipment (Transport of materials Viz. lorries and carts, concrete mixers)
  - (b) Organisation (i) Technical (ii) Unskilled.
  - (c) Resources in materials like teak wood, steel etc. and extent to which departmental help is not required for procurement of materials and transport of the same.
  - (d) Methods that will be adopted to speed up the work to ensure completion within or less than the time fixed for completion.
24. The Executive Engineer, reserves to himself the right of allotting the different sub-works to different contractors or one and the same contractor as he may decide after the receipt of tenders.
25. The contractors are liable to pay a penalty for non-employment of the technical staff as laid down in the conditions of employment of Technically qualified personnel

26. The cost of materials if supplied by the department will be recovered from the bills or any other amounts due from the contractors.
27. Retention money deposit (RMD) (with GST) at 5% shall be recovered from each bill based on the value of work done by the contractors 50% of RMD (i.e., 2½%) received from the bills would be paid to the contractor along with final bill. The balance 50% (i.e., 2½%) of the total value of work will be retained on the final bill of the work for the period one year reckoned from the date of completion of work in order to enable the department to watch the effect of all seasons of the work. The contractor should furnish an indemnity bond for further period of four years.

**Defects, shrinkages, etc., after completion.**

**If any defects, shrinkage or other faults which may appear in the above said period from the completion of works arising, in the opinion of the Executive Engineer, from faulty materials or workmanship not in accordance with the drawings, specification and instructions of the Executive Engineer shall upon the directions in writing of the Executive Engineer and within such reasonable time as shall be specified therein, be amended and made good by the contractor at his own cost unless the Executive Engineer shall decide that the contractor ought to be paid for the same at the rates agreed on such reduced or other rates as the Executive Engineer may fix and in case of default, the Executive Engineer may employ and pay other persons to amend and make good such defects, shrinkage or other faults or damage and all expenses consequent thereon and incidental thereto shall be borne by the contractor. If the contractor fails to comply with the above provision, the action will be taken for immediate cessation of all future business with the respective contractor, in addition to other legal remedies.**

28. Action against the contractors who have participated in the earlier tenders but failed to execute the agreement on some pretext after receipt of the work order will be taken as per the G.O. in force.
29. No tenderer is permitted to withdraw his / her / their tender at any stage. If any tenderer withdraws his / her / their offer within the tender validity period his / her / their EMD / SD (With GST) shall be forfeited and his / her / their name(s) will be recommended for blacklisting in future.

30. Only Contractors registered under appropriate Class with Tamil Nadu Police Housing Corporation/ PWD (with up- to-date renewal) alone are eligible to tender.
31. The tender will be considered only after satisfactory production of the credentials by the intending tenderers such as previous performance, nature and value of work done and required valid Registration certificate, Income Tax, Solvency etc.
32. The tenderer should be registered with GST
33. The Total value of a contract/Service which exceeds Rs.2.50 Lakhs, 2% GST Tax at Source will be deducted. (1% CGST & 1% SGST) as applicable from time to time in addition to 1% or 2% of TDS as per IT act.
34. **Contractors who succeed in the tenders are to get their names registered in TNPHC Ltd., in appropriate class prior to the execution of the agreement even though the contractors are registered in PWD.**

**OFFICE OF THE SUPERINTENDING ENGINEER/ SOUTH CIRCLE  
TAMIL NADU POLICE HOUSING CORPORATION LIMITED  
e -TENDERING  
LETTER OF APPLICATION**

Dated .....

To

The Superintending Engineer/ South Circle,  
Tamil Nadu Police Housing Corporation Ltd.,  
No.1, Inspector Quarters, New Natham Road,  
Madurai-14.

Sir,

I/We do hereby tender and if this tender be accepted, undertake to execute the following work. viz. ( Refer Annexure 'R' of Serial No.3)

As shown in the drawings and described in the specifications deposited in the Office of the Superintending Engineer, Tamil Nadu Police Housing Corporation Limited with such variations by way of alterations, additions to, and omissions from the said works and method of payment as are provided for in the conditions to contract for the sum of Rupees.....(in words and figures)

or such other sum as may be arrived at under the clause of the General conditions to contract relating to "Payment on lump-sum basis or by final measurement at unit prices".

I/We have also completed the priced list of items of **BoQ** i.e. Tender Coding Sheet annexed (in words and figures) for which I/We agree to execute the work and receive payments on detailed final measurement at Unit Prices.

I/We hereby distinctly and expressly declare and acknowledge that, before the submission of my/our tender I/We have carefully followed the instructions in the tender notice and have read the Tamil Nadu Building Practice and the Preliminary Specifications therein and that I/We have made such examination of the contract documents and the plans, specifications and quantities and of the location where the said work is to be done and such investigation of the work required to be done and in regard to the material required to be furnished as to enable me/us thoroughly to understand the intention of the same and the requirements, covenants, agreements, stipulations and restrictions contained in the contract, and in the said plans and specification and distinctly agree that I/ we will not hereafter make any claim or demand upon the Corporation based upon or arising out of any alleged misunderstanding or misconception, or mistake on my part of the said requirements, covenants, agreements, stipulations, restrictions and conditions.

\*\*\* I/We being a registered contractor enclose an income-tax verification / have/ already produced an income tax verification certificate in respect of (here particulars of the previous occasion on which the certificate was produced should be given.

\*\*\* I/We remitted through online ..... the sum of ..... (Rupees ..... ) in the ..... as prescribed in the Tender Notice towards Bid Security ( Earnest Money Deposit) (with GST) which will not carry any interest.

\*\*\* I/We hereby uploaded the proof of authority vide the payment of Bid Security ..... exempting me/us from the payment of Bid Security.

**Note.** \*\*\* to be scored out if not applicable.

If my/our tender is not accepted this sum shall be returned to me/us on my/our application when intimation is sent to me / us of rejection or at the expiry of 180 days from the date of this tender whichever is earlier. If my / our tender is accepted, the Earnest Money deposit (with GST) shall be retained by the Corporation as security for the due fulfillment of the contract. If upon written intimation to me/us by the Superintending Engineer indicating that my/our presence is required for the purpose of enquiry. I/we fail to attend the said office before the end of Period specified on such intimation and if upon intimation being given to me / us by the Superintending Engineer of acceptance of my/our tender. If I/We fail to make the Security Deposit / Additional Security Deposit (with GST) or to enter into the required agreement as defined in the tender notice, then I/We agree to the forfeiture of Earnest Money deposit (with GST). Any notice required to be served to me / us here under shall be sufficiently served on me / us if delivered to me / us personally or forwarded to me / us by post (registered or ordinary) or left at my / our address given herein such notice shall if sent by post be deemed to have been served on me/us at the time when in due course of post it would be delivered at the address to which it is sent.



I/We fully understand that the written agreement to be entered into between me/us and the Corporation shall be the foundation of the rights of both the parties and the contract shall not be deemed to complete under the agreement has first been signed by me / us and then by the proper officer authorized to enter into contracts on behalf of the Corporation.

I am/we are professionally qualified and my / our qualification are given below.

<b>Sl.No.</b>	<b>Name</b>	<b>Qualification</b>	<b>Experience</b>
---------------	-------------	----------------------	-------------------

#### **Contractor**

I/We will employ the following technical staff for the supervising the work and will see that one of them is always at site during working hours personally checking all item of works and paying extra attention to such works as require special attention (e.g.) Reinforced Concrete work.

<b>Name of members of technical staff Proposed to be employed</b>	<b>Qualification</b>	<b>Experience (in year)</b>
---	----------------------	-----------------------------

- Note:
- (a) The last two clauses should be Scored out if the cost of the work involved in less than Rs. 10,000/-
  - (b) The tenderer should score out the last clause or the penultimate according as they are themselves professionally qualified or undertake to employ technical staff under them.

**RATE OF PROGRESS**

(Fill in from tender notice)

<b>Period after the Commencement of</b>	<b>Percentage of work to be Completed on the whole work</b>
---	---



**BOOKLET : 2**

**CONTAINS PAGES : (22 PAGES)**

**[SCHEDULE – A]**

**(DETAILED TENDER SPECIFICATION)**

**TAMIL NADU POLICE HOUSING CORPORATION LIMITED**

No.1, INSPECTOR QUARTERS, TSP 6 TH BATTALION CAMPUS,  
NEW NATHAM ROAD,MADURAI – 625014.

**Schedule 'A'**

**Name of work: Special repair works to the Mess, Admin, New and Old Barracks building  
for imparting basic training to the Newly Recruited PCs at  
Permanent PRS NAVALPATTU in Trichy District for the year 2023-2024**

- A. The quantities here given are those upon which the lumpsum tender cost of the work is based, but they are subject to alterations, omissions, deductions or additions are provided for in the conditions of this contract and do not necessarily show the actual quantities of work to be done. The unit rates noted below are the governing payments for extras or deductions for omissions according to the conditions of the contract asset forth in the general conditions to the contract of the Tamil Nadu Building practice and other conditions or specifications of this contract.
- B. It is to be expressly understood that the measured work is to be taken net (not withstanding any custom of practice to the contrary) according to the actual quantities when in place and finished according to the drawing or as may be ordered from time to time by the Chief Engineer and the cost calculated-by measurement or Weight at the respective prices without any additional charges for any necessary or contingent works connected herewith. The rates quoted are for works in site and complete in every respect.



Item. No	Probable Quantity	Description of Work	TNBP No	Rate in Figures And words	Unit in Figures and words	Amount
1.1		<b>Earth work excavation for foundation</b> in all soils and sub-soils to the required depth as may be directed except in hard rock requiring blasting but inclusive of shoring, strutting, and bailing out water wherever necessary and refilling the sides of foundation with excavated earth in 150mm thick layers well watered rammed and consolidated and depositing the surplus earth in places shown clearing and levelling the site with an initial lead of 10 metres and lift as specified here under etc. complete in all respects complying with relevant standard specifications. <b>(Including Refilling)</b>  a) 0 to 2m depth.	17,23 & 24		1 m <sup>3</sup> (One Cubic Metre)	
41		<b>Painting the new Iron work</b> and other similar works such as PVC / ASTM Pipes, Kerb Stone and grills with two coats of approved first class synthetic enamel ready mixed paint of approved quality and brand, the paint should be supplied by the contractor at his own cost, (The quality and the brand of paint should be got approved by the Executive Engineer before use) complying with relevant standard specifications.	66 & 66A		1 m <sup>2</sup> (One Square Metre)	
47		Supplying and fixing of <b>aluminium towel rails of 75cm long</b> , including cost of screws, TW plugs and labour charges for fixing in position etc. complete in all respects and as directed by the departmental officers.			1 No. (Each)	



Item. No	Probable Quantity	Description of Work	TNBP No	Rate in Figures And words	Unit in Figures and words	Amount
52		<p>Supplying, laying, fixing and jointing the following dia <b>PVC pipes</b> as per ASTM D - 1785 of schedule 40 of wall thickness not less than the specified in IS 4985 suitable for plumbing by threading of wall thickness including the cost of suitable PVC/GI specials /GM specials like Elbow, Tee reducers, Plug, union, bend, coupler, nipple/ GM gate valve, check and wheel valve etc., wherever required above the ground level including the cost of Teflon tape, special clamps, nails, etc., fixing on wall to the proper gradient and alignment and redoing the chipped of masonry etc., as directed by the departmental officers.</p> <p><b>a) 32mm ASTM D schedule 40 threaded PVC pipe with necessary PVC/GI/GM specials</b></p> <p><b>b) 25mm ASTM D schedule 40 threaded PVC pipe with necessary PVC/GI/GM specials</b></p>			<p>1 RMT (One Running Metre)</p> <p>1 RMT (One Running Metre)</p>	



Item. No	Probable Quantity	Description of Work	TNBP No	Rate in Figures And words	Unit in Figures and words	Amount
69		<b>Electrical Arrangements:</b> Supplying and fixing of <b>15 amps 3 pin Power plug</b> type socket on a suitable MS box 16g thick concealed and covered with 3 mm thick laminated hylem sheet inclusive of all connections and cost of all materials.			1 No. (Each)	
76		Supplying and fixing of <b>8 SWG GI wire</b> on wall / below ground levels with necessary 'U' Nails, earth work excavation and refilling etc., including cost of all materials etc., all complete.			1 RMT (One Running Metre)	
112		Supplying and fixing of <b>300 mm dia sweep AC exhaust fan</b> of approved ISI Quality including necessary wall opening, fixing and finishing the wall opening and making good including cost of materials, labour for fixing, chipping and redoing necessary inter connection, scaffolding, hire charges for tools and plants etc., all complete and as directed by the departmental Officers.			1 No. (Each)	



Item. No	Probable Quantity	Description of Work	TNBP No	Rate in Figures And words	Unit in Figures and words	Amount
		<b>ANNEXURE TO SCHEDULE – A</b>				
2.1.1		Supplying and <b>filling in foundation and basement with gravel</b> in layers of 150 mm thickness well watered, rammed and consolidated complying with relevant standard specifications including cost of supplying gravel and as directed by the departmental officers.			1 m <sup>3</sup> (One Cubic Metre)	
2.1.3		<b>Supplying and filling in foundation and basement with crushed stone sand</b> in layers of 150 mm thickness well watered, rammed and consolidated complying with relevant Standard specification including cost of supplying <b>crushed stone sand</b> .			1 m <sup>3</sup> (One Cubic Metre)	
3.1.1		<b>Plain cement concrete 1:5:10</b> (One of cement, five of <b>crushed stone sand</b> and ten of hard broken stone Jelly) for <b>foundation</b> and basement using 40mm gauge hard broken stone jelly inclusive of shoring, strutting and bailing out water wherever necessary ramming, curing etc., complete in all respects complying with relevant standard specifications and as directed by the Departmental officers.			1 m <sup>3</sup> (One Cubic Metre)	
3.2.1		<b>Plain cement concrete 1:2:4</b> (One of cement two of <b>crushed stone sand</b> and four of hard broken stone jelly) using 20m gauge hard broken stone jelly with Admixture excluding shuttering and centering but including laying, curing and finishing with relevant standard specifications in <b>foundation and basement</b> , and other similar works & as directed by the departmental officers.			1 m <sup>3</sup> (One Cubic Metre)	
6.6.1		<b>Brick work in CM 1:5</b> (One of cement and five of <b>crushed stone sand</b> ) with Admixture using <b>Kiln burnt country bricks</b> of size 8¾"x4¼"x2¾" (22x11x7cm) in <b>foundation and basement</b> including dewatering wherever necessary proper setting, curing etc., complete with relevant standard specifications.			1 m <sup>3</sup> (One Cubic Metre)	





Item. No	Probable Quantity	Description of Work	TNBP No	Rate in Figures And words	Unit in Figures and words	Amount
9.6.1		<p><b>Brick work in Cement Mortar 1:6</b> (One of cement and six of <b>crushed stone sand</b>) with Admixture using <b>Kiln burnt country bricks</b> of size <math>8\frac{3}{4}" \times 4\frac{1}{4}" \times 2\frac{3}{4}"</math> (<b>22x11x7cm</b>) for super structure in the following floors including labour for fixing the doors, windows and ventilator frames in position, fixing of hold fasts, scaffoldings, curing etc., complete in all respect complying with relevant standard specifications and drawings.</p> <p><b>a. In Ground Floor</b></p> <p><b>b. In First Floor</b></p>			<p>1 m<sup>3</sup> (One Cubic Metre)</p> <p>1 m<sup>3</sup> (One Cubic Metre)</p>	
10.6.1		<p><b>Brick partition wall 110mm thick</b> using <b>kiln burnt country bricks</b> of size <math>8\frac{3}{4}" \times 4\frac{1}{4}" \times 2\frac{3}{4}"</math> (<b>22x11x7cm</b>) in <b>Cement Mortar 1:4</b> (One of cement and four of <b>crushed stone sand</b>) with Admixture for super structure in the following floors including labour for fixing the doors, windows and ventilator frames in position, fixing of hold fasts, scaffoldings, curing etc., complete in all respect complying with relevant standard specifications and drawings.</p> <p><b>a. In Foundation and Basement</b></p>			<p>1 m<sup>2</sup> (One Square Metre)</p>	
15.1.1		<p>Providing <b>Cuddappah slab of 20mm thick</b>, finishing with two sides for cupboard, wardrobes shelves, and other similar works including finishing and fixing in position complying with relevant standard specifications etc., compete in the following floors (measurement will be taken including bearing also) as directed by the departmental officers (Quality of cuddappah slab shall be got approved by the Executive Engineer/ Superintending Engineer/ Chief Engineer before use in works)</p> <p><b>a. In Ground Floor</b></p>			<p>1 m<sup>2</sup> (One Square Metre)</p>	



Item. No	Probable Quantity	Description of Work	TNBP No	Rate in Figures And words	Unit in Figures and words	Amount
22.3.5		Supplying and fixing of <b>Stainless Steel Padlock Latch 3" size, 2mm thick for Cupboard shutters</b> including cost of materials and labour charges for fixing in position etc., all complete and as directed by the departmental officers. (The brand and quality of the materials should be got approved from the Executive Engineer before use)			1 No. (Each)	
23.2.1		Supplying and fixing of <b>4 mm thick pin headed glass panels</b> with aluminium anodized 'u' shape beading of size 12x12 mm with 107 gram in average weight for 1 m length with aluminium bolts and nuts for the shutters of the steel windows already supplied to suit all the size and as directed by the departmental officers. (The quality of glass and aluminium beeding should be got approved from the Executive Engineer before use)			1 m <sup>2</sup> (One Square Metre)	
28.1		<b>Finishing the top of flooring in CM 1:4</b> (One of cement and four of <b>crushed stone sand</b> ) with Admixture <b>20mm thick</b> including surface rendered smooth including providing proper slopes, thread lining, curing and 150mm wide skirting around with the same cement mortar etc., complete in all respects.			1 m <sup>2</sup> (One Square Metre)	
33.1		<b>Plastering with CM 1:5</b> (One of cement and five of <b>crushed stone sand</b> ) with Admixture <b>12mm thick</b> finished with neat cement including providing band cornice, ceiling cornice, curing, scaffolding etc., complete in all respects and complying with relevant standard specifications.			1 m <sup>2</sup> (One Square Metre)	



Item. No	Probable Quantity	Description of Work	TNBP No	Rate in Figures And words	Unit in Figures and words	Amount
38.4.3		Painting the old walls and ceiling with one coat of <b>Oil Bound Distemper</b> including thorough scrapping, cost of paints, putty, brushes, watering, curing, etc., all complete as directed by the departmental officers (Oil Bound Distemper and its shade shall be got approved from the Executive Engineer before use)			1 m <sup>2</sup> (One Square Metre)	
44.6		Supplying and fixing of <b>110mm dia PVC SWR pipe</b> with ISI mark confirming to IS 13952:1992- type 'A' for Rain water down fall pipe with relevant specials such as gratings, shoes, bends, offsets confirming to IS 14735 including jointing with seal ring confirming IS 5382 with leaving a gap about 10mm to allow thermal expansion with necessary clamps, teak wood plugs, etc., of approved quality and including fixing C.I. gratings at the junction of parapet and floor or roof slab etc., including finishing etc., complete complying with relevant standard specifications.			1 RMT (One Running Metre)	
50.6.1		Supplying and fixing of fibre mixed <b>Precast slab of 50mm thick</b> of all required shapes made in cement concrete 1:3:6(one of cement, three of <b>crushed stone sand</b> and six of 20mm hard broken stone jelly) using 20mm hard broken stone jelly mixed with secondary reinforcement fibre of approved quality at 0.25% by weight of cement (125gm of fibre for 1bag i.e., 50Kg of cement) used including cost of all materials, moulding, curing, transportation, laying, pointing etc., for approach road, pavement slab and other similar works etc., complete as per the relevant standard specifications and as directed by the departmental officers. (The shape of slab and brand and quality of fibre should be got approved from the Executive Engineer before use)			1 m <sup>2</sup> (One Square Metre)	
50.7		Supplying and erection of Precast RCC Pillar of size 150x150x2400mm in standardized concrete mix M20 grade using 3 to 10mm HBS jelly, with necessary reinforcement including cost of moulding charges, casting, finishing, curing, lifting and placing in position etc., all complete and as directed by the departmental officers.			1 No. (Each)	



Item. No	Probable Quantity	Description of Work	TNBP No	Rate in Figures And words	Unit in Figures and words	Amount
52.4		Supplying, laying, fixing and jointing the following dia <b>PVC pipes</b> as per ASTM D - 1785 of schedule 40 of wall thickness not less than the specified in IS 4985 suitable for plumbing by threading of wall thickness including the cost of suitable PVC/GI specials /GM specials like Elbow, Tee reducers, Plug, unions, bend, coupler, nipple/ GM gate valve, check and wheel valve etc., wherever required above the ground level including the cost of teflon tape etc., Fully concealed in walls to the proper gradient and Alignment and redoing the Chipped portion of Masonry etc., all complete and as directed by the departmental officers.				
		<b>c) 20mm ASTM D schedule 40 threaded PVC pipe with necessary PVC/GI/GM specials</b>			1 RMT (One Running Metre)	
53.5		Supplying and fixing of porcelain <b>Wash hand basin</b> (White without Pedestal Type), superior variety of size 550x400mm (22"x16") with all accessories such as powder coated cast iron brackets, 32mm dia C.P. waste coupling, rubber plug and aluminium chain, 32mm dia GI 'B' class PVC waste pipe, 15mm dia CP angle valve, 15mm dia nylon connection, 15mm dia brass nipples, 15mm C.P. pillar tap & required grating etc., complete in all respects (Wash hand basin with CP fittings shall be got approved by the Executive Engineer before fixing).			1 No. (Each)	
53.5.2		Supplying and fixing of <b>C.P waste coupling with waste hose from Wash hand basin</b> including cost of materials and labour charges for fixing in position etc., all complete and as directed by the departmental officers. (The brand and quality of the materials should be got approved from the Executive Engineer before use)			1 No. (Each)	
54.1.1		Supplying and fixing of half turn Brass core <b>CP Long body tap</b> of 15mm dia of best quality including cost of half turn CP tap with required specials and labour for fixing etc., all complete and as directed by the departmental officers. (The quality and brand should be got approved from the Executive Engineer before use)			1 No. (Each)	



Item. No	Probable Quantity	Description of Work	TNBP No	Rate in Figures And words	Unit in Figures and words	Amount
54.2.1		Supplying and fixing of half turn Brass core <b>CP Short body tap</b> of 15mm dia of best quality including cost of half turn CP tap with required specials and labour for fixing etc., all complete and as directed by the departmental officers. (The quality and brand should be got approved from the Executive Engineer before use)			1 No. (Each)	
55.2.1		Supplying and fixing of <b>C.P. waste coupling with Waste Hose from Flat back Urinal</b> including cost of materials and labour charges for fixing in position etc., all complete and as directed by the departmental officers. (The brand and quality of the materials should be got approved from the Executive Engineer before use)			1 No. (Each)	
58.3		Supplying and fixing the following dia <b>PVC (SWR) pipe</b> with ISI mark confirming to IS 13952:1992- type 'B' for soil line with relevant specials confirming to IS 14735 including jointing with seal ring confirming to IS 5382 with leaving a gap about 10mm to allow thermal expansion, fixing the pipes into walls with necessary wooden plug, screws, holding wherever necessary and making good of the dismantled portion with necessary connections to sanitary fittings etc., complete in all respects and as directed by the departmental officers.  a) <b>110mm dia PVC SWR pipe including all required PVC specials etc., all complete.</b>  b) <b>75mm dia PVC SWR pipe including all required PVC specials etc., all complete.</b>			1 RMT (One Running Metre)  1 RMT (One Running Metre)	



Item. No	Probable Quantity	Description of Work	TNBP No	Rate in Figures And words	Unit in Figures and words	Amount
58.5		Supplying and fixing the following dia PVC(SWR) pipe with ISI mark confirming to IS 13952:1992- type 'A' with PVC <b>cowl</b> and relevant specials confirming to IS 14735 including jointing with seal ring confirming to IS 5382 with leaving a gap 10mm to allow thermal expansion and fixing the pipes into walls or over the septic tank with necessary wooden plug, screws, holding wherever necessary and making good of the dismantled portion with necessary connections to sanitary fittings etc., complete in all respects and as directed by the departmental officers. <b>a) 110mm dia PVC SWR pipe of 3metre with required PVC cowl &amp; PVC specials etc., all complete.</b>			1 No. (Each)	
60.1		Supplying and fixing of <b>PVC Nahani Trap</b> not less than 75mm 4 way /2 way (Superior variety) having minimum of water seal of 50mm confirm to relevant I.S. specifications with its latest amendments including resting on the bed of brick jelly concrete 1:5:10 (One of cement, five of <b>crushed stone sand</b> of ten of 40 mm gauge brick jelly) etc., complete as directed by the departmental officers (The PVC Nahani Trap should be got approved from the EE before use)			1 No. (Each)	
61.1.1		Supplying, laying and jointing the following dia UPVC non pressure pipe of <b>SN8 SDR 34 (S 16.5) as per IS 15328/2003</b> , Superior variety and tested with water including necessary earth work excavation for trenches and refilling the same, well rammed and consolidated after the pipes are jointed and laid to proper gradient to the alignment and as directed by the departmental officers (SN8 SDR 34 (S 16.5) as per IS 15328/2003 should be got approved by the Executive Engineer./ Superintending Engineer./ Chief Engineer., before use in works) <b>(a) 110mm dia UPVC Non Pressure pipe</b>			1 RMT (One Running Metre)	



Item. No	Probable Quantity	Description of Work	TNBP No	Rate in Figures And words	Unit in Figures and words	Amount
64.1.2		<b>Wiring with 1.5 sqmm PVC insulated single core multi strand fire retardant flexible copper cable</b> with continuous earth by means of 1.5 sqmm PVC insulated single core multi strand fire retardant flexible copper cable with ISI mark conforming to IS: 694/1990, 1.1 K.V. grade cable for <b>open wiring</b> with PVC rigid conduit pipe of 19mm/20mm dia heavy duty with ISI mark with suitable specials, TW switch box of size 100x100x75 mm and junction box of size 150x100x75mm, covered with 3mm thick laminated hylem sheet, TW round block, PVC bends, tees, junction boxes, TW plugs, brass screws etc., controlled by 5 amps flush type switch including circuit mains cost of all materials, specials etc., all complete. ( <b>open wiring</b> ) <b>a) Light point with ceiling rose</b>			1 Point (Each Point)	
68.2.2		<b>Wiring with 1.5 sqmm PVC insulated single core multi strand fire retardant flexible copper cable</b> with continuous earth by means of 1.5 sqmm PVC insulated single core multi strand fire retardant flexible copper cable with ISI mark conforming to IS: 694/1990, 1.1 K.V. grade cable for <b>open wiring</b> with PVC rigid conduit pipe of 19mm/20mm dia heavy duty with ISI mark with suitable specials, TW box of size 150x100x75mm, covered with 3mm thick laminated hylem sheet for <b>5 amps 5 pin plug socket point at convenient places</b> including circuit mains, cost of all materials, specials, etc., all complete.			1 Point (Each Point)	
75.1.2		Supplying and delivery of following <b>Electric Ceiling fan with ISI mark</b> with blades and double ball bearing, capacitor, etc., complete with 300mm down rod, canopies, capacitor, shackle blades with <b>electronic dimmer</b> suitable for operation on 230 volts 50 HTZ single phase AC supply conforming to ISS No.374/79 and provided with insulation. (The brand should be got approved from the Executive Engineer before supply made). <b>a) 48" Electric fan 1200mm sweep</b>			1 No. (Each)	



Item. No	Probable Quantity	Description of Work	TNBP No	Rate in Figures And words	Unit in Figures and words	Amount
75.1.3		Supplying and fixing of <b>Fan step Regulator 100W-1 Module - Lower end</b> including cost of materials and labour charges for fixing etc., all complete and as directed by the departmental officers. (The quality and brand of the material should be got approved from the Executive Engineer before use)			1 No. (Each)	
75.1.4		Supplying and fixing of <b>Ceiling Fan Condenser</b> including cost of materials and labour charges for fixing in position etc., all complete and as directed by the departmental officers. (The quality, brand and capacity of the condenser should be got approved from the Executive Engineer before use)			1 No. (Each)	
77.7		<b>Run off main with 2 wires of 2.5 Sqmm PVC insulated single core multi strand fire retardant flexible copper cable</b> with ISI mark conforming to IS: 694/1990, 1.1 KV grade cable with continuous earth by means of 2.5 sqmm PVC insulated single core multi strand fire retardant flexible copper cable with ISI mark conforming to IS: 694/1990, 1.1 KV grade cable in fully concealed 19/20mm dia rigid PVC conduit pipe with ISI mark etc. including cost of all materials, specials etc. all complete and as directed by the departmental officers.			1 RMT (One Running Metre)	
100		Supplying and fixing of <b>9 Watts LED bulb</b> of best quality including cost of material and fixing etc., all complete and as directed by the departmental officers. (The quality of the 9 w LED bulb should be got approved from the Executive Engineer before use)			1 No. (Each)	
101		Supplying and fixing of <b>25 Watts LED with street light fittings</b> arrangements including cost of materials labour charges for fixing of LED street light fitting etc all complete as per relevant standard specification and as directed by the departmental officers. (The quality of the 25 watts LED with street light fittings should be got approved from the executive engineer before use)			1 No. (Each)	





Item. No	Probable Quantity	Description of Work	TNBP No	Rate in Figures And words	Unit in Figures and words	Amount
101.1		Supplying of 20 feet height street light pole complete set with necessary accessories such as 2" dia MS pipe of 3mm tk 10' feet height and 1½" dia MS pipe of 3mm tk 10 feet height, ¾" GI pipe 2½ feet with necessary 1½" x ¾" clamp 2 Nos and street light MS box 1 No. 10A Connector – 1 No. 1.5 Sqmm wire 15.00 mtrs ½" foundation bolt 4 Nos. etc., all complete and as directed by the departmental officers. (The brand and quality of the material should be got approved from the Executive Engineer before use)			1 No. (Each)	
102		Supplying and fixing of <b>4'18 Watts Crystal LED Tube light</b> and fixing the tube light fittings on teak wood round blocks of 75mm dia or 40mm deep suspended from ceiling or mounted on the wall including cost of all materials and labour for fixing in position etc., all complete and as directed by the departmental officers. (The entire Tube light fittings should be got approved from the Executive Engineer before use)			1 No. (Each)	
102.1		Supplying and fixing of <b>Cool day light 4 feet 36 watts tube light</b> including cost of all materials and labour for fixing in position etc., all complete and as directed by the departmental officers. (The entire Tube light fittings should be got approved from the Executive Engineer before use)			1 No. (Each)	
106		Supplying and fixing of <b>5 Amps 5 Pin Flush type wall socket</b> including cost of materials and labour charges for fixing etc., all complete and as directed by the departmental officers. (The quality and brand of the materials should be got approved from the Executive Engineer before use)			1 No. (Each)	
107		Supplying and fixing of <b>5 Amps Flush type wall switch</b> including cost of materials and labour charges for fixing etc., all complete and as directed by the departmental officers. (The quality and brand of the materials should be got approved from the Executive Engineer before use)			1 No. (Each)	



Item. No	Probable Quantity	Description of Work	TNBP No	Rate in Figures And words	Unit in Figures and words	Amount
114		<p>Supplying and delivery of following <b>PVC Aluminium armoured LTUG cable</b> (PVC Aluminium Armoured LTUG 1100V grade) with ISI mark including cost of cable and conveying to the site of work etc., all complete and as directed by the departmental officers. [The brand and quality of the UG cable should be got approved from the Executive Engineer before use].</p> <p>a) <b>2 core 10 Sqmm PVC aluminium armoured LTUG cable</b></p> <p>b) <b>4 core 10 Sqmm PVC aluminium armoured LTUG cable</b></p>			<p>1 RMT (One Running Metre)</p> <p>1 RMT (One Running Metre)</p>	
115		Labour charges for laying of <b>PVC aluminium armoured LTUG cable</b> in a trench to a depth of 0.75m including earth work excavation, Providing sand cushion, Brick layer protection and refilling etc., all complete and as directed by the departmental officers <b>below ground level</b>			1 RMT (One Running Metre)	
116		Labour charges for laying of <b>PVC aluminium armoured LTUG cable</b> on post and wall to make good etc., all complete complying with relevant standard specifications and as directed by the departmental officers <b>above ground level</b>			1 RMT (One Running Metre)	
120.2		Labour charges for Removing of Horizontal shaft Centrifugal pumpset ( <b>Coupled / Monoblock</b> ) (Above 3 HP upto 7.5 HP) in Borewell / Open well including Tools and Plant arrangements etc., all complete and as directed by the departmental officers.			1 No. (Each)	
120.3		Labour charges for Removing of <b>submersible pumpset in Borewell/openwell (upto 5 HP)</b> including Tools and Plant arrangements etc., all complete and as directed by the departmental officers.			1 No. (Each)	



Item. No	Probable Quantity	Description of Work	TNBP No	Rate in Figures And words	Unit in Figures and words	Amount
120.4		<b>Labour charges for Refixing of Horizontal shaft, Centrifugal Pumpset (Coupled / Monoblock) (Above 3 HP upto 7.5 HP) in Borewell / Open well etc., all complete and as directed by the departmental officers.</b>			1 No. (Each)	
120.5		<b>Labour charges for Refixing of Submersible Motor Pumpset in Borewell / Open well upto 5 HP etc., all complete and as directed by the departmental officers.</b>			1 No. (Each)	
120.6		<b>Rate for flushing of borewell of 6" dia</b> requiring less than 4 hours operation using drill rods/ hose with required size of pipes for various capacity compressor including transportation, labour, and fuel charges for compressors etc., all complete and as directed by the departmental officers <b>i) 600 Cfm (100 /150 PSI)</b>			1 Hr. (One Hour)	
120.7		<b>Rewinding of upto 5 HP Submersible pumpset</b> including rewinding charges, cost for bearing and labour charges for removing and refixing etc., all complete and as directed by the departmental officers.			1 No. (Each)	
120.8		<b>Rewinding of upto 7.5 HP Sewage motor pumpset</b> including rewinding charges, cost for bearing and labour charges for removing and refixing etc., all complete and as directed by the departmental officers.			1 No. (Each)	



Item. No	Probable Quantity	Description of Work	TNBP No	Rate in Figures And words	Unit in Figures and words	Amount
121.1		<b>Supplying and delivery of three phase panel board of Direct online starter with two level guard and auto start (2 HP)</b> confirming to IS 13947 and IEC 60947-1 suitable KW rating for operation in AC/three phase/50 HZ ( $\pm 5\%$ ) and 415 V ( $\pm 10\%$ ) including ammeter, voltmeter, thermal over load relay, 16 amps 2 pole magnetic contactor with under voltage protection, indication lamp, starting capacitor, running capacitor and on/off push button switches, 5 way connector, wiring with 1 sqmm./ 1.5 sqmm copper PVC insulated cable, powder coated vermin proof box including the capacitor (The cost of capacitor is to be taken separately) etc., all complete and as directed by the departmental officers. (The three phase panel board assembly should be got approved from the Executive Engineer before use)			1 No. (Each)	
121.2		Supply and delivery of direct online starter single phasing preventor with analog ammeter and voltmeter conforming to IS 13947, IEC 60947-1 with auto restart facility for pump houses where panel boards are available and as amended thereafter with suitable KW rating for operation in AC/ three Phase/50HZ(+/- 5%) and 415V (+/- 10%) including Ammeter, Overload relay, under Voltage release with no Volt coil, Air Break contactors suitable for next Standard higher KW rating, Single phasing preventor, dry running preventor and On/Off Push button switches, including the capacitor(the cost of capacitor is to be taken separately). and as directed by the departmental officers. (The single phase panel board assembly should be got approved from the Executive Engineer before use)			1 No. (Each)	
122		Supplying and fixing of the following dia of the <b>GM specials</b> as per IS BS 5154 and related to IS specification of approved superior quality all, etc., complete and as directed by the departmental officers. (The quality of the GM specials should be got approved by the Executive Engineer before use)  <b>a) 50mm dia GM Non Return valve</b>			1 No. (Each)	



Item. No	Probable Quantity	Description of Work	TNBP No	Rate in Figures And words	Unit in Figures and words	Amount
123		Supplying and Delivery of PVC insulated and sheathed <b>3 core 4 sq.mm flat type copper cable for submersible pumpset</b> confirming to IS 694/1990 best approved quality with ISI mark including cost of cable, delivery at site and fixing the cable in bore well etc., all complete and as directed by the departmental officers. (The quality of the material should be got approved from Executive Engineer before use)			1 RMT (One Running Metre)	
125		Supplying and laying of following dia UPVC pipes <b>below ground level</b> including earth work excavation, cutting, threading, jointing, lowering, laying to proper grade and alignment and refilling the trench with excavated earth etc., all complete and as directed by the departmental officers. (The quality and brand of the material should be got approved by the Executive Engineer before use) <b>a) 50 mm dia UPVC Pipe</b>			1 RMT (One Running Metre)	
127		Supply and delivery of required dia <b>Nylon rope</b> of superior quality for submersible pumpset in borewell and as directed by the departmental officers (The quality of Nylon rope should be got approved by the Executive Engineer before supply)			1 RMT (One Running Metre)	
145		Supplying and fixing of <b>C.P. Angle cock tap</b> including cost of materials and labour charges for fixing in position etc., all complete and as directed by the departmental officers. (The brand and quality of the materials should be got approved from the Executive Engineer before use)			1 No. (Each)	
148		Supplying and fixing of <b>Brass Chromium Plated Pillar Tap 15mm dia (Heavy Type)</b> - including cost of materials and labour charges for fixing in position etc., all complete and as directed by the departmental officers. (The brand and quality of the materials should be got approved from the Executive Engineer before use)			1 No. (Each)	



Item. No	Probable Quantity	Description of Work	TNBP No	Rate in Figures And words	Unit in Figures and words	Amount
149		Supplying and fixing of <b>(Soap tray) Granite Slab</b> including cost of Granite slab Grout and labour charges for fixing in position etc., all complete and as directed by the departmental officers. (The shade and quality of the materials should be got approved from the Executive Engineer before use)			1 No. (Each)	
154		Supply and fixing of <b>TNEB meter board suitable for 3 phase 100A service connection</b> made up of suitable angle iron frame work of size 2 feet x 1-1/2 feet using angle iron of size 1-1/2" x 1-1/2" x 1/4" rigidly fixed on wall covered with hylem sheet of size 2 feet x 1-1/2 feet of 12mm thickness with necessary bolts and nuts supports and supply and fixing of 3 Nos. 100A fuse units (500V), 1 No. neutral link, copper earth flat of size 1" x 1/4" with inter connection of EB meter to fuse units by 16 Sq.mm PVC insulated copper wire with earth connection complete etc., all complete and as directed by the departmental officers. (The brand and quality of the material should be got approved by the Executive Engineer before use)			1 No. (Each)	
154.1		Supply and fixing of <b>TNEB meter board suitable for 3 phase 63A service connection</b> made up of suitable angle iron frame work of size 2 feet x 1-1/2 feet using angle iron of size 1-1/2" x 1-1/2" x 1/4" rigidly fixed on wall covered with hylem sheet of size 2 feet x 1/2 feet of 6mm thickness with necessary bolts and nuts supports and supply and fixing of 3 Nos. 63A fuse units (500V), 1 No. neutral link, copper earth flat of size 1" x 1/4" with inter connection of EB meter to fuse units by 16 Sq.mm PVC insulated copper wire with earth connection complete etc., all complete and as directed by the departmental officers. (The brand and quality of the material should be got approved by the Executive Engineer before use)			1 No. (Each)	



Item. No	Probable Quantity	Description of Work	TNBP No	Rate in Figures And words	Unit in Figures and words	Amount
162		<b>Supplying and fixing of 120W LED street light</b> fitting the luminaire comes with pressure die cast aluminium housing with efficiently designed heat sink to deliver proper management and heat resistant toughened glass fixed with SS screws. secondary lenses with peanut optic profile is used on leds to ensure better light throw across & along the road. constant driver with inbuilt protections against lightning, over voltage & short circuit helps ensuring longer life) colour temperature : 5700k $\pm$ 300k total harmonic distortion THD $\leq$ 10% power factor PF $\geq$ 0.95 ingress protection : IP-66 side entry mounting for 50 to 60 mm OD pipe bracket Top maintenance : Access to driver is from top ease of maintenance etc., all complete and as directed by the departmental officers (The quality of the material should be got approved from the Executive Engineer before use) etc.,			1 No. (Each)	
168		Supplying and fixing in position of <b>Barbed Wire 10 gauge 2 ply and four pronged</b> including cost of all materials and labour charges etc., all complete and as directed by the departmental officers. (The quality of the material should be got approved by the Executive Engineer before use)			1 RMT (One Running Metre)	
169		Supplying and fixing of <b>PVC Hylem sheet 3mm thick</b> including cost of materials and labour charges for fixing etc., all complete and as directed by the departmental officers. (The quality of the material should be got approved by the Executive Engineer before use)			1 m <sup>2</sup> (One Square Metre)	



Item. No	Probable Quantity	Description of Work	TNBP No	Rate in Figures And words	Unit in Figures and words	Amount
361.1		Supplying and laying superior variety <b>concrete Designer tiles</b> for flooring in CM 1:3 (one of cement and three of <b>crushed stone sand</b> ) 20mm thick, including fixing in position, cutting the tiles to the required size wherever necessary, pointing the joints with White/colour cement, finishing, curing etc., complete and as directed by the departmental officers. (The brand quality of tiles should be got approved from the Executive Engineer before use).			1 m <sup>2</sup> (One Square Metre)	
378.2		Supplying and fixing of <b>Vitrified tiles</b> of best approved quality ( <b>Ivory</b> ) 600x600x8mm for flooring and other similar works (The colour and shade shall be got approved from the executive engineer before using) over cement mortar 1:3 (one of cement and three of <b>crushed stone sand</b> ) 20mm thick including fixing in position cutting the tiles to the required size wherever necessary pointing the joints with Grout (Tile Joint Filler) curing finishing etc., all complete and as directed by the departmental officers.			1 m <sup>2</sup> (One Square Metre)	
572		Supplying, fabrication and fixing in position of <b>Mild steel angles for truss</b> including cost of all materials and labour charges, etc., all complete and as per relevant specification and as directed by the departmental officers. (The quality and brand of the material should be got approved from the Executive Engineer before use)			1 Kg (One Kilogram)	
573		Construction of <b>Inspection Chamber of size 60x60x75 CM</b> including earth work excavation, PCC 1:5:10, Brick work in CM 1:5, necessary plastering, PCC 1:8:16, floor finish and precast cover slab 40mm tk fabrication of steel, curing, refilling etc., all complete and as directed by the departmental officers.			1 No. (Each)	





Item. No	Probable Quantity	Description of Work	TNBP No	Rate in Figures And words	Unit in Figures and words	Amount
574		Supplying and fixing of <b>250 Amps 4 Pole MCCB</b> including cost of materials and labour charges for fixing etc., all complete and as directed by the departmental officers. (The quality of the material should be got approved by the Executive Engineer before use)			1 No. (Each)	
575		Servicing the 1 no. of Dosing Pumpset for RO Plant and Replacing 1 No. of 1242 Vessel, 1 No. of 25 NB valve for RO plant including cost of all materials and labour charges etc., all complete and as directed by the departmental officers.			1 Job. (One JOB)	
796.2		Painting the old outer walls with one coat of approved best ready mixed <b>Exterior Emulsion paint</b> without primer including thorough scrapping etc., all complete and as directed by the departmental officers. (The quality brand and its shade of the exterior emulsion paint shall be got approved from the Executive Engineer before use)			1 m <sup>2</sup> (One Square Metre)	
800.5		Dismantling and clearing away of floor finish and dadoing walls in cement mortar with <b>Mosaic tiles / Glazed tiles / Clay tiles / Cuddappah slab</b> without affecting the adjacent structures, including the cost of required tools and plants and scaffolding if necessary and clearing the debris away from the site etc., all complete and as directed by the departmental officers.			1 m <sup>2</sup> (One Square Metre)	
800.9		Dismantling clearing away and carefully stacking materials useful for reuse for Doors and windows including removal of frames, hinges and fastenings etc., all complete and as directed by the departmental officers.			1 m <sup>2</sup> (One Square Metre)	



**BOOKLET : 3**

**CONTAINS PAGES : (34 PAGES)**

**(OTHER TERMS & CONDITIONS OF THE  
TENDER INCLUDING DRAWING)**

**TAMIL NADU POLICE HOUSING CORPORATION LTD.,**  
No.1, Inspector Quarters, TSP 6th Battalion Campus, New Natham Road, Madurai – 625 014.  
**Schedule ‘B’**

Name of work: Special repair works to the Mess, Admin, New and Old Barracks building for Imparting Basic Training to the Newly Recruited PCs at Permanent PRS NAVALPATTU in Trichy District for the year 2023-2024

Sl. No.	Drawing No.	Description	Remarks
1.		Type Design & Lay out	Note: (i) All drawings to be signed by the contractor as well as the officer entering contract.

CONTRACTOR NO. OF CORRECTIONS SUPERINTENDING ENGINEER/SOUTH CIRCLE.



## **Schedule 'C'**

### **Additional Specifications**

1. The Contractor shall make his own arrangements for clean, fresh water for use on the work and shall meet all charges therefor.
2. All iron work or steel work of every kind, except such as is to be embedded in cement concrete shall immediately on arrival at the site be properly scrapped and wire brushed and given a priming coat of red lead paint without claim for extra.
3. The Teak Wood shall be of best Indian Wood only and the country wood shall be species like Pillamarudu or Kariamarudhu or its equalent shall be subject to inspection and approval by the Executive Engineer before use on work.
4. Holes and chasis for electric wiring, water supply, drainage etc., shall be provided as directed during the progress of work without claiming any extra charges.
5. All external corners, edges of beams, edges of door and window openings etc., shall be finished with camber and also truly vertical or horizontal as the case may be. The rate of plastering shall include the cost of finishing as above. No extra for finishing the corners, edges etc., will be paid.
6. The arrangements for Steel rods for reinforcement for each RCC work shall be in accordance with the working drawings supplied.
7. The planks for form work and centering for RCC work shall be of well seasoned timber approved by the Executive Engineer according to sub clause 10 of T.N.B.P. No. 30. They must be made smooth and perfectly level at top so as to give a smooth and even finish to the R.C.C. Ceiling. Alternatively, the contractor may use steel sheets over wooden frame provided, the required finish to the underside of the slabs is obtained. Mango planks shall not be used under any circumstances. Centering and form works shall be provided to the extent and area ordered by the Executive Engineer during the execution. Finishing shall be done as per sub-clause 15 of TNBP No. 30.
8. All cement concrete for RCC works shall be machine mixed and vibrated.
9. All lime mortar shall be grinded in a mortar mill as per TNBP.
10. The rates for brick work in all the floors includes the labour charges for fixing the frames of doors and windows and fixing G.I. pipes outlets for windows as per sub-clause 14 of TNBP No.31.
11. The rate for plastering includes providing cornice, band cornice, ceiling cornice and skirting wherever necessary as directed by the Department officers.
12. It is not obligatory to supply any materials (Controlled or non-controlled) required for the constructions. The contractor is expected to make his own arrangements. The quality of these materials should confirm with the specification given in ISI. Ordinary Portland Cement 43 Grade grey colour / SRC if necessary based on site condition (without any extra cost) confirming to IS Specification should be used. Steel rods should also confirming to ISI.
13. Steel rods should be cut and placed as reinforcement with proper anchorage to the available rods at site so as to ensure the minimum wastage possible.



14. The cement brought by the contractor for use should carefully stacked in approved stores and on works as and when required the proper care so as to ensure the minimum wastage possible.
15. All the dismantled work should be made good plastered and cement painted to match the original surface.
16. For all RCC works the rate shall include the treatment of bearings as per plan of TNBP. No extra payment will be made.
17. If the rates are not separately called for, similar items of works in different floors, the contractor should quote, one rate applicable for all the floors indicated in the detailed plans, any claims for extra rates for such items floor wise will not be entertained under any circumstances.
18. The contractor should not employ the labour below the age of adults.
19. If night work required to fulfill the agreed rates of progress, all arrangement shall be made by the contractor inclusive of lighting without any claim for extra rate.
20. Rates :- The tenderer shall quote their rates for the finished item of work only as given in the schedule it shall be clearly understood that no increase in the rates tendered for will be permissible on any account after the tenders are accepted.
21. The rate for all the items shall be quoted for in the metric units.
22. The tenderer shall examine closely the General conditions of contract of the Tamil Nadu Building practice and sign the copy kept in the office into taken of such study before submitting his tender. Unit rates which shall be for finished work in site.
23. The electrical works should be executed by a person or firm holding 'A' grade or 'B' grade license issued by Licensing Board / Government of Tamil Nadu.
24. Once the offer of the tenderer is accepted by the TNPHC, if either the tenderers choose to withdraw this tender or for any reason refused to execute the agreement and comply with the terms of the tender and agreement, the amount deposited by the tenderer towards the EMD / SD and A.S.D (with GST) shall be forfeited and tenderer shall not be entitled to refund the same.
25. The contractor should take risk insurance against fire, other usual risk for all or any loss or damages occasioned by or arising out of acts of God, and in particular unprecedented flood, volcanic eruption, earthquake or other convulsion of nature, invasion, the act of foreign enemies, hostilities or warlike operations (before or after declaration of war) rebellion, military or usurped power, such policy should cover the construction period against the risk by the construction at his / their own cost and produce to the concerned Executive Engineer / Superintending Engineer within one month from the date of execution of the agreement failing which the TNPHC shall be entitled to take out whatever policy as may be required to cover those eventualities and to effect recovery towards the cost of such policies from the contractor's payments with a penalty of 50% on the cost of such policies.



26. Water closet, basins, urinals, sinks and other sanitary ware shall be of approved make as required in the relevant items. The fixing of these should be in accordance with the special specifications after the completion of the work.
27. The clamps of G.I. pipes fittings should not be spaced more than 6' part from the wooden plug for pipe and bracket fittings should be properly fixed in C.M 1:3 in holes made in and not hammered into the walls. The size of plugs should be not less than 1"sq. at this end and at the other end with the depth of not less than 3".
28. The contractor should procure approved quality of paint only in containers. The above container should be used in the presence of the Assistant Executive Engineer and got approved before use. On any account paint in other than original container will not be allowed for use.
29. Recovery under Revenue recovery Act: Whenever any amount has to be paid by the contractor in view of termination of the contract by virtue of clause 57.4 (TNBP) for any amount that may be due or may become due from the contractor under the present and the contractor is not responding to the demand for the payments of the said amount, then the TNPWC Ltd. shall be entitled to recover the said amount under the provisions of the Tamil Nadu Revenue Recovery Act,
30. Any extension of time may not be granted by the authority unless the delay is caused by the Department.
31. The contractor is bound by all the condition of clauses of standard General condition to contract as amended time to time if in the course the contract, any G.O. is issued introducing new condition or clauses (for PWD / Other department), Supplemental Agreement must be executed by the contractor for implementing the condition.
32. In the event of the work transferred to any other unit Division the Executive Engineer / Assistant Executive Engineer who is incharge of the units / Divisions / Sub Division having jurisdiction over the above shall be competent authority to exercise all the powers and privilege of TNPWC and to act on behalf of TNPWC.
33. The contractor shall form his own approach road to the work sites for which no extra will be paid to him. On completion of work the contractor shall not be permitted to remove the materials laid for the formation of road. If the contractor is allowed to use the existing roads, he shall maintain them in good condition at his own cost throughout the period of contract.
34. The work should be executed in accordance with the circular instruction of the Chief Engineer issued from time to time. Copy of the circular instruction can be perused in the department office during office hours.
35. During the course of contract period deductions of Income Tax shall be made as per the provisions of the Income Tax Act amended from time to time as applicable.
36. Royalty / seigniorage charges due for use of any quarry land shall be paid by the contractor.
37. The contractor should be responsible for the safe custody storage of materials under dry conditions at the place of work spot approved by the Executive Engineer.
38. The contractor should abide by the contractor's labour regulation of PWD framed by Tamil Nadu.
39. Impounding minimum 10 cm of water over roofs for 48 hours before laying the weathering course and pressed tiles to check the water tightness.



40. Xerox copy of the certificate for the technical personnels to be enclosed along with the tender.
41. Action against the contractors who have participated in the earlier tenders but failed to execute the agreement on some pretext after receipt of the work order will be taken as per the G.O. in force.
42. No tender is permitted to withdraw his / her / their at any stage. If any tender withdraws his/ her/ their offer within the tender validity period his / her / their EMD/ SD (with GST) shall be forfeited and his / her / their name will become noted for blacklisting in future.
43. Only contractors registered under appropriate Class with Tamil Nadu Police Housing Corporation Limited and PWD (With up-to-date renewal) alone are eligible to tender.
44. The tenderer should be registered with GST
45. The Total value of a contract/Service which exceeds Rs.2.50 Lakhs, 2% GST Tax at source will be deducted. (1% CGST & 1% SGST) as applicable from time to time in addition to 1% or 2% of TDS as per IT act



## **Schedule 'D'**

Applicable to all cases of work where a minimum of fifty workers are employed except works relating to roads, Channels and Canals.

### **For the provision of health and sanitary arrangements for workers:**

The contractor's special attention is invited to clauses to the General conditions to contract of Tamil Nadu Building Practice and he is requested to provide at his own expense the following amenities to the satisfaction of the Chief Engineer.

#### **1. First Aid:**

At the work site there shall be maintained in a readily accessible place, first aid appliances and medicines including adequate supply of sterilized dressings and sterilized cotton wool. The appliances shall be kept in good order. They shall be placed under the charge of the responsible person who shall be readily available during working hours.

#### **2. Drinking Water:**

- a. Water of good quality fit for drinking purposes shall be provided for the work people on a scale of not less than 15 litres per head per day.
- b. Where drinking water is obtained from an intermittent public water supply, each work place shall be provided with storage tank where such drinking water shall be stored.
- c. Every water supply storage shall be at a distance of not less than 15 metres from any latrine drain or other source of Pollution. Where water has to be drawn from an existing well which is within such prominently of latrine, drain or any other source of pollution the well shall be properly chlorinated before water is drawn from it for drinking. All such wells shall be entirely closed it and to be provided with a trap door which shall be dust and water proof.
- d. A reliable pump shall be fitted each covered well, the trap door shall be kept locked and opened only for cleaning or inspection which shall be done atleast once a month.

#### **3. Latrines and Urinals:**

There shall be provided within the precincts of every work place latrines and urinals in an accessible place and the accommodation separately for each of them, shall be on the following scale or on the same as directed by the Executive Engineer in any particular case.

	Seats
i. Where the number of person employed does not exceed 50 persons	2 Nos
ii. Where the number of persons employed exceed 50 but does not exceed 100	3 Nos
iii. For every additional 100	3 Nos

If women are employed separate latrines and urinals screened from those for men shall be provided on the same scale.

Except in work places provided with water flushed latrines connected with a water store sewage system all latrines shall be provided with receipt table on dry earth system which shall be cleaned atleast four times daily and atleast twice during working hours and kept in a strictly sanitary conditions. The receiptance shall be tarred inside and outside atleast once a year.





#### **4. Washing and Bathing places:**

Adequate washing and bathing places shall be provided separately for men and women, such places shall be kept in clean and drained condition. Bathing or washing should not be allowed in or near any drinking water well.

The excreta from the latrines shall be disposed off at the contractor's expense to the out way pits approved by the local public health authority. The contractor shall also employ adequate number of scavengers and conservancy staff to keep the latrines and urinals in a clean condition.

#### **5. Sheds During Rest:**

At the work site there shall be provided free of cost two suitable sheds one for male and the other for female for rest fit for the use of labourers.

6. At every work place at which 50 or more women workers are ordinarily employed there shall be provided two huts of suitable size for the use of children under age of 6 years belonging to such women. One hut shall be used for infants games and play and the other as their shed room. The huts shall not be constructed on a lower standard than following.

- i. **Thatched roofs**
- ii. **Mud floors and walls**
- iii. **Planks spread over the mud floor and covered with matting.**

The use of the huts shall be restricted to children, their attendants and mothers of the children.

#### **7. Canteen:**

A cooked food canteen on a moderate scale be provided for the benefits of workers if it is considered expedient.

#### **8. Shed for Women:**

The contractor should provide at his expense shed for housing his workman. The shed shall be on a standard not less than the cheap shelter type to live in which the work people in the locality are accustomed to. A foot area of about 6'x5' for 2 persons shall be provided. The sheds are to be in rows with five feet clear space between rows if conditions could permit. The work people shall be laid out in units of 400 persons each. Each unit to have a clear space of 12m around.



**TAMIL NADU POLICE HOUSING CORPORATION LTD.,**  
MADURAI – 625 014

**Schedule 'E'**

Statement showing furniture fittings for doors, windows & Ventilators

Name of work : (Refer Annexure 'R' Sl.No.3)

Sl. No.	Description	Door		Glazed wooden window Per bay for 135/120/105 cm overall height	Swing type Ventilator wooden (0.90x0.60m/0.75x0.75m)	Remarks
		Single various sizes	Double various sizes			
1.	Aluminium butt hinges 125mm with <b>brass screws</b>	3 Nos.	6 Nos.	-	-	All the fittings should have ISI mark except Nylon Bush.
2.	Aluminium butt hinges 100mm with <b>brass screws</b>	-		-	-	-do-
3.	Aluminium butt hinges 75mm with <b>brass screws</b>	-		3 Nos.	-	-do-
4.	Aluminium Tower Bolt with <b>brass Screws</b> 150 × 12mm	2 Nos.	4 Nos.	-	-	-do-
5.	Aluminium aldop with bolts and nuts <b>brass screws</b> 250 × 16mm	1 No.	1 No.	-	-	-
6.	50 × 8mm aluminium Tower Bolt with <b>brass Screws</b>	-		2 Nos.	-	-do-
7.	a) Aluminium door handles 150mm with flat section with <b>brass screws</b>	1 No.	2 Nos.	-	-	-do-
8.	Nylon bush with <b>brass screws</b>	1 No.	2 Nos.	1 No.	-	-do-
9.	Hooks and Eyes 3" (Aluminium)	-		-	1 No.	-do-
	Hooks and Eyes 6" (Aluminium)	-		1 No.	-	-do-
	Hooks and Eyes 8" (Aluminium)	-		-	1 No.	-do-
10.	Ventilators pivoted hinges with screws	-		-	2 pairs	-do-
11.	Door Stopper	1 No.	2 Nos.	-	-	-do-

\*(Not applicable for PVC Door & UPVC windows & Ventilators)



**TAMIL NADU POLICE HOUSING CORPORATION LTD.,**  
**ADDITIONAL CONDITIONS OF TENDER AND AGREEMENT**

1. Once the offer of the tender is accepted by the Corporation, if either the tenderer chooses to withdraw his tender or any reason refused to execute the agreement and comply with the terms of the tender and agreement the amount deposited by the tenderer towards EMD/SD and ASD (with GST) shall be forfeited and the tenderer shall not be entitled for the refund for the same.
2. The contractor/ Contractors shall take risk insurance at his/her/their own cost against losses due to floods and other acts of God. No claim from the Contractor shall be entertained by the department for such losses.
3.
  - i) Earnest Money Deposit (with GST) : 1% (one) upto Rs. 20.00 lakhs of estimate value plus 1/2% (half) of the amount by which the estimated value exceeds Rs. 20.00 lakhs.
  - ii) Security Deposit (with GST) : Will be 2% (two) of the contract value minus the E.M.D. (with GST) already remitted along with the tender
  - iii) Retention Money Deposit (with GST) : At 5% (five) shall be recovered from the each bill based on the value of work done by the contractors.
4.
  - (a) 50% of retention money deposit (with GST) amount recovered from the bills would be paid to the Contractor along with final bill.
  - (b) The E.M.D., SD and A.S.D. (with GST) shall be released only after the expiry of six months from the date of completion of work.
  - (c) Balance 50 % of RMD (with GST) will be released after expiry of one year from the date of completion of work for which the contractor has to give a written under taking in the form of an indemnity bond for further period of 4 years (AS per GO MS NO.283 public works (G2) Dept dated:21.05.1999
5. The Total value of contact/service which exceeds Rs.2.50 Lakhs, 2% GST Tax at Source will be deducted. (1% CGST & 1% SGST) as applicable from time to time in addition to 1% or 2% of TDS as per IT act
6. In the case disputes for claims upto Rs.50,000/- the Chief Engineer, Tamil Nadu Police Housing Corporation Limited shall be final deciding authority. In case of claims exceeds Rs.50,000/- it should be referred to court of law in Tamilnadu



7. The contractors / tenderers who are covered under the Employees Provident fund and Miscellaneous Provision Act 1952 shall produce the code No. (Regn.No) of their establishment. If the contractors are not covered under the above said Act, they shall furnish a declaration to that fact.  
It is obligatory on the part of the contractor to recover the Employees Provident Fund Subscription from the Employees who work under them/him/her and remit to the Regional Provident Fund Commissioner.
8. Further, if any modifications or amendments are issued by the concerned department / Government from time to time, the same is applicable as and when such orders are issued. The contractors should be aware of the rules stipulated on this by the concerned department / Government
9. All the dismantled work should be made good to match the original surface.
10. The contractor shall make use of kiln burnt ground moulded country bricks/stock bricks of clear designation so having average compressive strength of 35 kg/cm<sup>2</sup> for country bricks and 50 kg/cm<sup>2</sup> for chamber Burnt/stock bricks and 100 Kg/cm<sup>2</sup> for fly ash bricks.
11. The testing shall be done by the contractor at their own cost of the materials such as cement, sand, bricks, steel, pressed tiles, water, etc., & the finished products like concrete cubes. Every consignment of cement and steel supply should be tested for quality at contractors own cost.
- 12. On evaluation of tender, if it is found that if the overall quoted amount of the tender is less than 5 to 15% of the value put to tender, the contractor shall pay an additional security deposit at 2% of the estimate value put to tender. If the tender discount exceeds 15% the contractor shall pay an additional security deposit of 50% of the difference between the quoted amount and estimate amount by means of Demand Draft / Pay Order / Banker's Cheque from any one of the Nationalized Bank / Scheduled bank in favour of the Executive Engineer concerned / NSC / KVP should be pledged in favour of the respective the Executive Engineers. Failure to furnish the additional security deposit within 15 days from the date of receipt of acceptance order and execute the agreement shall entail cancellation of award of contract with forfeiture of EMD furnished.**
13. The contractor shall make their own arrangements for the leveling instruments at site of work.
14. The tenderer / contractor will make his/her/their own arrangements to procure and use ISI brand Cement and ISI Brand steel required for the work.
15. It should be clearly understood that the rate quoted by the tenderer / contractor is inclusive of the cost of 43 grade ordinary portland cement / SRC and steel and other incidental charges such as conveyance, loading, unloading, stacking at site and testing charges etc., complete



16. The tenderer / contractor will produce test certificate obtained from any one of the Govt. institutions for cement and steel brought to site. As and when required by the Department the cement and steel brought to the site shall be tested by the Department from any one of the approved Govt. institutions and only when the test results confirm to the ISI specification they will be allowed to be used in the works.
17. The tender shall be valid for a period of 180 days from the last date for receipt of tenders.
18. Every tenderer is expected, before quoting his rates to inspect the site of proposed work. He should also inspect quarries, and satisfy himself about the quality and availability of materials such as Bricks, Sand & HBS jelly etc. The best class of materials shall be allowed to use on the work. In every case the materials must comply with the relevant standard specifications. Samples of materials called for in standard specifications, or in this tender notice or as required by the Executive Engineer in any case shall be submitted for the Executive Engineer's approval before the supply to the site of works is began. Accordingly the tenderers are requested to quote their own workable rates.

The Tamil Nadu Police Housing Corporation Limited will not however after acceptance of contract rate pay any extra charges for lead or for any other reasons in case the contractors is found later on to have misjudged the materials available. Attention of the contractor is direct to the General conditions of the contract regarding payment of seignior ages tolls etc. subject to price adjustment clause provided for in this tender schedule.

19. The best class and renowned brand of approved quality of materials shall be allowed to use in the works. The samples of materials to be supplied / required (i.e. Cement, Sand, M.Sand (Crushed Stone sand), Bricks, Fly ash bricks, Steel, HBS jelly, Electrical, Water supply, Sanitary items, Paints, Furniture fittings etc.,) for the work shall be got approved from the Chief Engineer / Superintending Engineer / Executive Engineer of concerned before delivery made.
20. Tenderers representative participating in tender opening should produce the authentication letter from the tenderer on the date and time of opening of tender
21. Tenders from joint ventures will not be considered.
22. All Xerox copies of the documents uploaded with tender should be got attested from the notary public / Gazatted officer
23. Telegraphic tenders will not be accepted.
24. The tenderers are not permitted to produce/submit any documents after opening/during opening of tender The tenders along with the supporting documents received through online alone will be taken into account for processing of e-tender. **Except the Original Demand Draft for Tender Processing fee scanned along with the tender**

**25. Insurance :**

The contractor should insure the construction workers employed by them for an amount fixed by the respective department / State Government / Central Government / Honorable Court of law with modifications and amendments if issued from time to time at the own cost of the contractor

**26. Condition for Engaging the migrated interstate workers in the Construction work site by the Contractors in the Construction work site :**

- a) The contractor should take the labour insurance for the construction workers employed by them as per the statutory Government norms.
- b) The contractor should have the labour license while engaging more than 20 labours.
- c) The contractor should also have all the details of labours engaged by them like Aadhar card, Photos etc., and the same should be handed over to the local Police Station to avoid the difficulties and problem facing the unpleasant issues in the site like group clash among the construction workers / life loss / any legal problem rising with the labours.
- d) The contractor should engage the watch and ward during the night time in the construction work site without fail so as to maintain the safety of the labours.

**27. Child labours should not be employed in the construction sites. It's violation of law.**



**TAMILNADU POLICE HOUSING CORPORATION LTD.,**  
**SPECIAL CONDITION – TREE PLANTING**

1. The tree planting work should be commenced within a fortnight from the date of execution of agreement.
2. Maintenance period : Six month is to be taken into account from the date of completion of tree planting.
3. If any damages occur to the planted trees, those trees will have to be replaced and maintained for six month. The maintenance period of six month for those trees will be taken into from the date of replacing of the damaged trees with freshone.
4. Only one variety of trees should be planted.
5. Flame of forest, rain trees, margosa and other trees as directed by department are to planted.
6. 30% of payment will be made soon after planting of trees and the sign of life in them is seen. The balanced 70% will be made in the period of six month on Quarter years payment as follows based on the satisfactory progress of the trees growth.

**I Quarter Year 35%**

**II Quarter Year 35%**



## **SPECIAL CONDITIONS FOR SENDING THE CEMENT CONCRETE CUBES FOR TESTING**

The contractor should make arrangements for getting mould to the site for casting of cubes for testing of concrete strength.

1. **Mould** : The concrete mould' should be as per IS Specification (IS-516-1959) the details of which are as follows:

The mould shall be of metal, preferably steel or cast iron, and stout enough to prevent distortion. It shall be constructed in such a manner as to facilitate the removal of the moulded specimen without damage and shall be so machined that when it is assembled ready for use, the dimensions and internal faces shall be accurate within following limits.

The height of the mould and the distance between opposite faces shall be the specified size  $\pm 0.2\text{mm}$ . The angle between adjacent internal faces and top and bottom planes of the mould shall be  $90^\circ \pm 0.50^\circ$ . The interior faces of the mould shall be plane surface with a permissible variation of 0.03 mm. Each mould shall be provided with a metal base plate having a plane surface and to support the mould during the filling without leakage and it shall be preferably attached to the mould by springs for screws.

The interior surfaces of the mould shall be thinly coated with mould oil to prevent adhesion of the concrete.

2. **Compacting** : The concrete shall be filled into the mould in layers approximately 5 cm deep. Each layer shall be compacted either by hand or by vibration as described below (as per ISI)

When compacting by hand, the standard tamping bar shall be used and the strokes of the bar shall be distributed in a uniform manner over the cross section of the mould as prescribed in I.S.I. and for cubical specimen in no case, shall be concrete be subjected to less than 35 strokes per layer for 15 cm cubes (as per I.S.I.)

When compacting by vibration each layer shall be vibrated by means of an electric or pneumatic hammer of vibrator (as per I.S.I.)

3. The concrete cubes shall be cured for 28 days and send on 29<sup>th</sup> day. If the day falls on a holiday the cubes shall be sent on the next working day.
4. All the charges connected with the cube testing etc. shall be borne the contractor.



**Quality Plan for Material, Testing (Revision -4)  
Laboratory Tests for Building Materials**

Procedure for Quality Plan for Material Testing					Doc.No	OC/QP/01
					Issue.No	4
					Date of Issue	
					Page	of 4
SL.No	Material to be Tested	Sampling	Name of test	Permissible Limits	Standards	Record Reference
1	Water	Lab Test: Local Source - Once in Three months Out source - Once in a month			IS 456- 2000 Clause 5.4	ST/RG/01
			a) To Neutralize 100 ml of water using Phenolphthalein as an indicator (Acidity).	Not more than 5 ml (or 50 mg/Lit) of 0.02 normal NaOH		
			b) To Neutralize 100 ml of water using mixed indicator (Alkalinity)	Not more than 25 ml (or 250 mg/Lit) of 0.02 normal H <sub>2</sub> SO <sub>4</sub>		
			c) Solids:			
			(i) Total Dissolved Solids	3000 mg/Lit		
			(ii) Sulphates (as SO <sub>4</sub> )	400 mg/Lit		
			(iii) Chlorides (as Cl)	2000 mg/Lit for Concrete not containing embedded steel and 500 mg/Lit for Reinforced Concrete work.		
			(iv) Suspended Matter	2000 mg/Lit		
			d) pH value	Not less than 6		
		Field Test: (Using Litmus Paper) Local Source - Once in Fortnight Out Source - For each Load (Lorry Load)	a) pH value	Not less than 6		Field Observation Register
2	Cement (43 Grade)	One test for Every 300 Tonnes of single Brand (Test to be done, if there is change in Brand)			IS 269-2015	ST/RG/01
			a) Initial setting Time	Not less than 30 minutes		
			b) Final setting Time	Not more than 600 minutes		
			c) Fineness of Cement			
			i) By Permeability Method	Not less than 225 m <sup>2</sup> /Kg		
			(or)			
			ii) By Standard Sieve Test	Retained not more than 10%		
			d) Soundness of Cement			
			i) By Le-Chatelier Method	Expansion not more than 10 mm		
			(or)			
			ii) By Auto Clave Test	0.80%		
			e) Compressive Strength of C.M (1:3) Cube			
			i) 3 days (72 +/- 1 hr)	Not less than 23 Mpa (or) 230 Kg/Cm <sup>2</sup>		
			ii) 7 days (168 +/- 2 hrs)	Not less than 33 Mpa (or) 330 Kg/Cm <sup>2</sup>		
			iii) 28 days (672 +/- 4 hrs)	Not less than 43 Mpa (or) 430 Kg/Cm <sup>2</sup>		
3	Steel					
	a) Mild Steel (Grade I - Fe 250)	Each Load and Each Diameter (Min. 3 Samples)			IS 432 (Part-I) 1982	ST/RG/01
			a) Yield Stress	Min. 250 N/mm <sup>2</sup> (Or) 25 Kg/mm <sup>2</sup>		
			b) Elongation	Min. 23.0%		
			c) Ultimate Tensile Stress	Min 410 N/mm <sup>2</sup> (Or) 41 Kg/mm <sup>2</sup>		

Procedure for Quality Plan for Material Testing					Doc.No	QC/QP/01
					Issue.No	4
					Date of Issue	
					Page	of 4
SL.No	Material to be Tested	Sampling	Name of test	Permissible Limits	Standards	Record Reference
	b) High Strength Deformed Bars (Fe 415)	Each Load and Each Diameter (Min. 3 Samples)			IS 1786 - 2008	ST/RG/01
			a) 0.20% Proof Stress / Yield Stress	Min. 415 N/mm <sup>2</sup> (or) 41.50 Kg /mm <sup>2</sup>		
			b) Elongation	Min. 14.50%		
			c) Tensile Stress	10% More than the actual Proof stress. But not less than 485 N/mm <sup>2</sup> (or) 48.50 Kg / mm <sup>2</sup>		
	C) High Strength Deformed Bars (Fe 500)	Each Load and Each Diameter (Min. 3 Samples)			IS 1786 - 2008	ST/RG/01
			a) 0.20% Proof Stress / Yield Stress	Min. 500 N/mm <sup>2</sup> (or) 50.0 Kg /mm <sup>2</sup>		
			b) Elongation	Min. 12.0%		
			c) Tensile Stress	8% More than the actual 0.2 Percent Proof stress. But not less than 545 N/mm <sup>2</sup> (or) 54.50 Kg / mm <sup>2</sup>		
4	Sand	Each Load	Clay, Fine silt and Fine Dust	Not more than 5% by Mass	IS 2116-1980	ST/RG/01
5	Coarse Aggregate	Every Quarry	a) <b>Either Crushing Value (Or) Impact Value</b>		IS 383-1970	ST/RG/01
			i) <b>Crushing Value</b>			
			Aggregates used for concrete other than wearing surfaces.	Not more than 45%		
			Aggregates used for concrete for wearing surfaces (Such as Roads, Pavements).	Not more than 30%		
			<b>(Or Alternatively)</b>			
			ii) <b>Impact Value</b>			
			Aggregates used for concrete other than wearing surfaces	Not more than 45% by weight		
			Aggregates used for Concrete for wearing surfaces (Such as Roads, Pavements).	Not more than 30% by weight		
			b) <b>Abrasion Value</b>			
			For Aggregates to be used in Concrete for wearing surfaces.	Not more than 30%		
			For Aggregates to be used in other concrete	Not more than 50%		
6	Bricks	Lot Size - For Every One Lakh Bricks - (Number of Samples 20.Nos)			IS 1077-1992	ST/RG/01
			<b>For Class 35</b>			
			a) Compressive Strength	Not Less than 35 Kgf/cm <sup>2</sup> (or) 3.50 N/mm <sup>2</sup>		
			b) Water Absorption	Not more than 20% by Weight		
			c) Efflorescence	Rating not more than Moderate		
			<b>For Class 50</b>			
			a) Compressive Strength	Not Less than 50 Kgf/cm <sup>2</sup> (or) 5.0 N/mm <sup>2</sup>		
			b) Water Absorption	Not more than 20% by Weight		
			c) Efflorescence	Rating not more than Moderate		

Procedure for Quality Plan for Material Testing					Doc.No	QC/OP/01
					Issue.No	4
					Date of Issue	
					Page	of 4
SL.No	Material to be Tested	Sampling	Name of test	Permissible Limits	Standards	Record Reference
7	Fly Ash Brick	Lot Size - For Every One Lakh Bricks - (Number of Samples 20.Nos)			IS 12894 -2002	ST/RG/01
			<b>For Class 100</b>			
			a) Compressive Strength	Not Less than 100 Kg/cm <sup>2</sup> (or) 10.0 N/mm <sup>2</sup>		
			b) Water Absorption	Not more than 20% by Weight		
			c) Efflorescence	Rating not more than Moderate		
8	Hydraulic pressed Tiles	One test for area upto 1999 sq.m and one additional test for every 1000 sq.m. and part thereof			IS 2690 - 1993	ST/RG/01
			a) Water Absorption	Shall not exceed 15%		
			b) Flexural Strength	Shall not be less than 20 Kg / cm <sup>2</sup>		
9	Vitrified Tiles	One Test for an area upto 1999 sq.m and one additional test for every 1000sq.m. and part thereof.			IS 15622 - 2006	ST/RG/01
			Deviation percent in Length & Width (2 or 4 sides)	±0.10		
			Deviation percent in Thickness	±4.00		
			Maximum Deviation percent in Rectangularity	±0.10		
			Surface Flatness (Warpage)	±0.20		
			Water absorption percent by mass	Average < 0.08 Individual max 1.0		
			Modulus of rupture in N/mm <sup>2</sup>	Average 47, Individual 44 min		
			Breaking Strength in, N	> 7.5mm thickness, 1500 (Min)		
			Scratch hardness of surface (Mohs)	6, Min		
			Bulk density in (g/cc)	2.20 Min		
			Impact Resistance	Required		
			Chemical Properties / Resistance	Required		
10	Electric Cable	One test for each Brand, each size	Conductor resistance at 20°C		IS 664 - 1990	ST/RG/01
			For 1.5 Sq.mm cable	Max. allowable limit 12.10 Ohm / Km		
			For 2.5 Sq.mm cable	Max. allowable limit 7.40 Ohm / Km		
			For 4.0 Sq.mm cable	Max. allowable limit 4.95 Ohm / Km		
11	Wood	One sample for each work	Lab Test - Moisture Test	Not more than 12%	IS 287 - 1993	ST/RG/01
			Field Test - Visual observation	Free from Rotten, unsound knots (or) knots in cluster	IS 3629 - 1960	
12	Cube test in Lab		Compressive strength of 150mm Cube		IS 456- 2000	ST/RG/01
		1 to 5 m <sup>3</sup> - 1 set	M20 (1:1.5:3)			
		6 to 15 m <sup>3</sup> - 2 sets	7 days	Not less than 135 Kg / cm <sup>2</sup>		
		16 to 30 m <sup>3</sup> - 3 sets	28 days	Not less than 200 Kg / cm <sup>2</sup>		
		31 to 50m <sup>3</sup> - 4 sets	M25 (1:1:2)			
		>50m <sup>3</sup> - 4 plus one for each add 50m <sup>3</sup>	7 days	Not less than 170 Kg / cm <sup>2</sup>		
		(1 set = 3 cubes)	28 days	Not less than 250 Kg / cm <sup>2</sup>		
			M30			
			7 days	Not less than 205 Kg / cm <sup>2</sup>		
			28 days	Not less than 300 Kg / cm <sup>2</sup>		
13	Slump test	Type of work	With vibration	Without vibration		ST/RG/01
	Slump test at site for all Reinforced concrete at regular intervals (Slump in mm)	Mass concrete, large section, roads and pavements	10 to 25	50 to 75		

Procedure for Quality Plan for Material Testing					Doc.No	OC/QP/01
					Issue.No	4
					Date of Issue	
					Page	of 4
Sl.No	Material to be Tested	Sampling	Name of test	Permissible Limits	Standards	Record Reference
		RCC foundation, substructures, thick walls and other heavy sections	26 to 50	40 to 115		
		Thin vertical sections such as walls, beams, columns with congested reinforcement	40 to 50	100 to 175		
		When using concrete Pump	80 to 100			
14	M-Sand				IS: 383-2016 (3 <sup>rd</sup> Revision) For Zone-II	
14.1	Test for Size and Grading of Aggregate		IS Sieve Size in mm		IS: 2386(Part-I)-1963	
		a)	10 mm	Shall be 100%		
		b)	4.75 mm	Shall be between 90 & 100%		
		c)	2.36 mm	Shall be between 75 & 100%		
		d)	1.18 mm	Shall be between 55 & 90%		
		e)	600 micron	Shall be between 35 & 59%		
		f)	300 micron	Shall be between 8 & 30%		
		g)	150 micron	Shall be between 0 & 10%		
14.2	Test for Specific Gravity			Shall be between 2.1 and 3.2		
14.3	Test for Water absorption, %			Shall not be more than 5%		
14.4	Test for Bulk density				IS: 2386(Part-III)-1963	
		a)	Bulk density in Kg/l-loose condition	Limit not specified		
		b)	Bulk density in Kg/l-compacted condition	Limit not specified		
14.5	Test for Deleterious Materials					
		a)	Coal and Lignite	Shall not be more than 1%		
		b)	Clay lumps	Shall not be more than 1%		
		c)	Material finer than 75 $\mu$ m IS sieve	Shall not be more than 10%		
		d)	Organic Impurities	Shall pass the test		
		e)	Silt content	Limit not specified		
14.6	Test for Soundness of Aggregate					
			% loss of weight of the material after 5 cycles when tested with Sodium sulphate solution.	Shall not be more than 10%		
14.7	Test for Total Alkali Content					
			Total alkali content as Na <sub>2</sub> O equivalent Percent	Shall not be more than 0.3%		
14.8	Test for Sulphate content					
			Test for Sulphate content as SO <sub>3</sub>	Shall not be more than 0.5%		
14.9	Test for Acid Soluble Chloride content					
			Acid Chloride content Percent	Shall not be more than 0.04%		
14.10	Test for Alkali Aggregate reactivity		Acceleration Mortar bar Method			
			The Average expansion of accelerated mortar bar after 16 days of casting percentage	1. Expansions of <0.10% - Indicates Innocuous behavior of aggregate. 2. Expansions between 0.10 and 0.20% includes both Innocuous and deleterious aggregate. 3. Expansion >0.20% indicative of Potentially deleterious aggregate		
14.11	Test for Bulking of Sand percent		Bulking of sand Percent	Limit not specified	IS: 2386(Part-III)-1963	



## **CONDITIONS OF EMPLOYING TECHNICALLY QUALIFIED PERSON**

Technical qualified man should be employed as follows:

SL.NO.	Value of Contract (with GST)	Qualification and No. of Technical Assistant to be employed
(1)	(2)	(3)
1.1	Upto 1 Lakh	No Technical Assistant need be employed. However, if the officer who accepts the agreement, feels that the nature of work required a Technical Assistant conditions may be stipulated in the tender notice that one diploma holder in Civil Engineering or a retired Junior Engineer may be employed.
1.2.	Rs. 1 Lakh to Rs. 3 Lakhs	One Diploma holder in Civil Engineering or not less than one retired Junior Engineer.
1.3.	Rs. 3 Lakhs to Rs.10 Lakhs	One B.E., (Civil) or equivalent degree holder or not less than one retired sub-divisional officer (Assistant Executive Engineer or Assistant Divisional Engineer).
1.4.	Rs.10 Lakhs to Rs.25 Lakhs	One B.E., (Civil) or equivalent degree holder with three years experience in Civil Engineering works not less than one retired sub-divisional Officer plus one Diploma holder in Civil Engineering.
1.5.	Rs.25 Lakhs to Rs.50 Lakhs	One B.E., (Civil) or equivalent degree holder with three years experience or not less than one retired sub-divisional officer (retired Assistant Executive Engineer) plus two Diploma holders in Civil or two retired Junior Engineers.

## ALTERNATIVE

One B.E., (Civil) or equivalent degree holder with three years experience or not less than one retired Sub-Divisional Officer and one more B.E., (Civil) or equivalent degree holder.

- 1.6. Above Rs.50 Lakhs To be examined in individual case depending on the nature of and the technical skill involved and defined in the Tender Notice regarding the number of qualified technical person to be employed by the contractor.
2. A penalty of Rs.500/- p.m. for Diploma holder and Rs.1,000/- p.m. for Degree holder be levied in case of default on the part of contractors in following the norms laid down above.
- 3 The employment of Technical Assistant could be based only on the value of contract. Engineers with Mechanical Engineering Qualification and retired from Civil Engineering department are also suitable to supervise the Civil Engineering works because of their experience in Civil Engineering field.

**\*\* I am / we are professionally qualified and my / our qualifications are given below.**

NAME	QUALIFICATION	EXPERIENCE
------	---------------	------------



I / we will employ the following technical staff for supervision the work and will see that one of them is, always at site during working hours personally checking all items of work that paying extra attention to such works is required special attention (e.g.) reinforcement concrete work.

Name of member of technical staff proposed to be employed	QUALIFICATION	EXPERIENCE
---	---------------	------------

In deciding the period of absence, the certificate from the Assistant Exe. Engineer in-charge of the work Counter signed by the Executive Engineer – in-charge shall be taken as the conclusive evidence and I/we shall be bound by such a certificate.

- \*\* Note :**
1. In case of contractor, who is professionally qualified is not in a position to remain always at the site of the work during working hours personally checking all items of work and paying extra attention to such works as may demand special attention. (e.g.) R.C. work etc., he should employ technically qualified men (as prescribed for the work).
  2. The Tenderers should score out the last clause if they are themselves professionally qualified and undertake to employ technical staff under them.



**TAMIL NADU POLICE HOUSING CORPORATION LTD.,**  
**SPECIAL CONDITION FOR ELECTRICAL WORKS**

1. The work shall be carried out in accordance with the General specification for electrical works and the code of practice for electrical wiring installation I.S. 732-1963 & I.S. 3043-1964 and as amended upto date. All installation shall comply with the requirements of Indian Electricity Rules 1956 & Act and I.S. Code amended upto date.
2. Approval of the Engineer in-charge shall be taken well in advance for all materials and brand of materials to be used on work by the contractors, based on the approved brand of materials. The choice of brand of materials from the approved list is at the discretion of the Engineer-in-charge and his decision will be final. The contractor is bound to use the brand of materials selected by the Engineer-in-charge.
3. Bad workmanship is liable to be rejected in to.
4. The contractor shall supply on completion of work completed plan along with insulation polarity and earth tests reports before the installation is handed over to the Engineer in-charge in good condition in triplicate. The tests should be carried out in the presence of Engineer-in-charge at contractors cost.
5. All repairs and patch work shall be neatly carried out to match the original finish and to the entire satisfaction of Engineer-in-charge.
6. The contractor shall make his own arrangement at his own cost for all general T&P and spl. T&P required on the job.
7. The contractor shall make his own arrangements for storage of materials and watch and ward at his own cost, till the installation (completed work) is handed over to the Department after obtaining service connection from Electricity Board and testing the line. Any loss and tampering of materials for which the payment was made good by the Department will be made by the contractor at his own cost.
8. Issue of the materials to the contractor wherever stipulated will be regulated to the needs from time to time depending upon the progress.
9. Materials stipulated for issue shall be taken over to the site of work and the safe custody till completion of the job is the responsibility of the contractor.
10. All the debris due to electrical works shall be removed from site by the contractor as soon as the work is completed.
11. Electrical works shall be progressed by the Contractor side by side with the progress of the building work burying of conduits for recessed portion shall be planned together with the building progress so that there is no hindrance to the buildings progress at any stage.
12. The internal E.I. shall be ordinarily carried out according to the drawing supplied with the schedule of work subject to change made by the Engineer-in-charge.
13. The wiring route shall be marked at site first and get approval from the Engineer-in-charge before commencement of actual work. The work must be carried out as directed by Engineer-in-charge.
14. PVC wiring shall be neatly painted with two coats for non-cracking paint / distemper suitable for painting PVC wire and of suitable colour to match the surroundings as per the direction of Engineer-in-charge.
15. In place where electrical conduit is required to pass through wall/RCC column beam etc., the conduit shall be laid during the execution of work in consultation with the Engineer-in-charge so as to avoid the need for cutting the structure at the later date.



16. The T.W. materials such as fillets specials TW boxes and all materials shall be got approved from the Engineer-in-charge before use to ensure the quality of materials.
17. In the case of recessed conduit works, the MS boxes shall also be recessed and covered with 1/8" (3 mm) hylem/Bakelite sheet. The thickness of MS sheet shall not be less than 3 mm thick.
18. Provision of fittings.
  - a. All switch Board shall be so placed that the bottom is normally 1.22 meter above floor level of such height as decided by the Engineer-in-charge.
  - b. All fittings shall be provided at 2.6 metre from the floor level or such height as decided by the Engineer in-charge.
  - c. The convenient 5/15 Amps. plug socket shall be 25cm. above the floor level or such height as decided by the Engineer in-charge.
  - d. Wiring shall run normally at 2.6 metre from the floor level or such height as decided by the Engineer in-charge.
19. The materials issued if any by the Department to the contractor, the cost will be recovered at the stores issue rate. If the contractor fails to return the surplus materials after completion of work, the cost will be recovered at double the stores issue rate or market rate whichever is higher.
20. Tools and plant General and Spl. as required on the work is to be arranged by the contractor at his own cost.
21. Brass tinned like/joint clips of 0.32 mm (30 gauge) thick upto 40mm length and 0.40 (28 gauge) thick above 40mm length and of width shall be used on the work.
22. Brass hinged brass hooks and eyes, single plank teak wood boards of 60mm minimum depth in case of open wiring and minimum depth of 100 mm in the case of concealed wiring and not less than 6.5 mm thickness shall be used to the works.
23. Fixing of wooden battens.
  - a. The Screws shall be used for fixing the wooden batten and accessories at an interval not exceeding 50cm. The thickness of batten shall be less than 10mm.
  - b. The clips are provided on the wooden batten with screws/pins and spaced at an interval of 15cm both in the case of horizontal and vertical run.
  - c. Round block shall not be less than 75mm dia. and 40mm deep and fixed by means of 2 nos. of screws.
24. Piano type switches outlet of approved make wherever needed shall be used for recessed boards after getting the approval of Engineer in-charge.
25. Only brass screws shall be used for fixing fitting switches plugs and sockets main boards and distribution board and T.W. accessories etc., required for the, wiring.
26. All conduit pipe shall be approved gauge (not less than 16 SWG : 14SWG) solid drawn or lap welded finished with galvanized or stone enameled finished. The saddles used shall not be less than 24 gauge upto 25mm dia pipes and not less than 20 gauge for inner dia pipes.





27. The main earthing shall not less than 8 SWG copper (4.06mm) in case of copper wire earthing or 6 SWG.GI wire (4.98mm) in case of G.I. wire earthing. Separate earthing shall be provided for all mountings of rain Boards, distribution boards, 5/15 amps. C.S. plug sockets with not less than 14 SWG of copper (2.03 mm).
28. Earthing shall confirm to relevant I.S. Code 3043-1966, the G.I. Pipe earth electrode system is adopted G.I. pipe shall be of medium class 38/40mm dia. 3.75 metres long. The electrode/ shall be buried in the ground vertically with its top not less than 20 cm. below ground level, Normally an earth electrode shall provide 1.5 metres away from any building., In case of providing twin earthing the distance between the earth pits shall be 10 feet. Alternate layers of charcoal or cock and seal of minimum 15 cm thick are to be provided from the bottom of earth pit upto 1 metre below ground level and the masonry work is to be carried out in brick with the cement mortar 1:4 above the last layer and the top is to be covered by Suitable cast iron frame and cover.
29. The staircase light point wiring must be done by looping or piece wire system and which must control phase or live wire only.
30. Looping in system is to be adopted for wiring. Normally the looping of neutral of light, fan, plugpoint etc., should be restricted to three points for a single wire from the switch board.
31. The wooden batten and specials shall not butt jointed and joints should be lap joined.
32. The wiring must be done using bend and corners wherever necessary sharp bending or cable must be avoided.
33. The lighting circuit shall not have more than 10 point or a load of 800 watts whichever is less.
34. Power wiring shall be kept separate and distinct from the lighting wiring.
35. The contractor should be present at the premises at the times of effecting service connection by the Electricity Board authority and afford all facility for testing and commissioning the installation.
36. The contractor should provide sufficient leads for connecting the main switches to meters and cut out provided by the Electricity Board at his own cost.
37. The apartment main switches and the main switches at the Electricity Board service connection boards should be numbered in paint for easily identification and the danger boards should be provided wherever necessary according to I.E Rules and Act regulations.
38. Looping of neutral and connection wires in the switch boards must be carried out through mechanical connectors and proper insulation shall be provided inside the switch board wherever necessary to avoid short circuiting the system.
39. The scaffolding and the shed required for the electrical installation works should be put up by the contractor at his own cost.
40. The run of main relates to the mains run from the main switch provided inside the apartments to the main switch provided for service connection by the Electricity Board authorities. The Distribution Box used shall be metallic enclosed type with fuse unit and neutral link. The earthing for the, main switches provided in the service connection Board should be properly interconnected and connected to the main earthing system.



## **SPECIAL CONDITIONS FOR GOODS AND SERVICE TAX (GST)**

1. Cost of Tender schedule for sale, includes applicable (GST).
2. The amount of EMD inclusive of GST (Basic Rate + GST) will be calculated as 1% of the contract value of work put to tender for upto Rs.20.00 Lakhs plus 0.5% of the value of work put to tender for above Rs.20.00 Lakhs (Including the GST amount).
3. The tenderer shall quote the rates and prices (both in figures and words) for all the items of the works described in the Bill of Quantities excluding GST along with sum of the quoted tender value excluding GST at the end (both in figures and words).
4. Government of India has notified vide Notification No.20/ 2017 – Central Tax (Rate), dated 22<sup>nd</sup> August, 2017 and Notification No. 24 / 2017 – Central Tax (Rate) dated 21<sup>st</sup> September, 2017, the concessional rate of the Goods and Services Tax (GST) at 12% [ CGST at 6% + SGST at 6%] is leviable for any Government Contract, whether Civil or Electrical, irrespective of the Goods and Services Tax (GST) rate applicable on purchase of goods used in the execution of Government Contract. **However, with effect from 01.01.2022 CBIC notification number 15/2021 (CTR) dated 18th November 2021 by amending principal notification number 11/2017 has removed the Government entity from the above concession rate and made all the works contract services provided to government entity are taxable at 18%. Hence, the GST amount will be calculated at 18% from the sum of total tendered value quoted by the tenderer for construction cost (Excluding GST) specified in the Coding Sheet, Subject to GST rate applicable from time to time as recommended by the GST Council.**
5. All duties, taxes, and other levies except GST, payable by the contractor under the contract, or for any other cause shall be included in the rates, prices and total Bid Price submitted by the Bidder.
6. As per Notification 202, dated 29.06.2017 and as per sub-section (2) of section 7 of the Tamil Nadu Goods and Services Act, 2017, (Tamil Nadu Act 19 of 2017), activities or transactions undertaken by State Government shall be treated neither as supply of goods nor a supply of service.
7. As per Chapter IX (Section 41) of the Tamil Nadu Goods and Services Act, 2017, every registered persons may be entitled to take the credit of eligible input tax, as self-assessed, in his return and such amount shall be credited on a provisional basis to his electronic credit ledger.



8. As per PWD Revised SoR (2017-18), dt: 21.10.2017, Under General Note, 8 (ix), the Contractor is eligible to get refund of excess tax paid over or liable to pay tax for this Contract Work.
9. The total bid price will be the cumulative of Value quoted for construction (Total Basic rate + GST) shall be substituted
10. The security Deposit (With GST) of 2% (Two percentage) of the value of contract in one of the forms prescribed in TNPWC by taking into account of the amount of EMD already deposited with the tender, it would be sufficient to pay the balance amount to make up the 2% of the value of contract for the purpose of security deposit (Including of GST amount).
11. In addition to the aforesaid security deposit, retention amount shall be deducted from the running account bills, a sum equivalent to 5% (Five Percent) of the total value (including the Goods and Services Tax (GST) Amount for all the running account bill) of each bill as retention money.
12. Out of the 5% retention amount (with GST), 2½ % (Two and Half Percent) of the total value of the work so far executed will be released to the contractor on payment of final bill.
13. The balance 2½% will be retained for a period as specified in the tender schedule reckoned from the date of completion of the work, as all defects shall have been made good according to the true intent and meaning hereof, whichever shall happen last.
14. The retention amount of 2½% including GST (Two and half Percent) of the total value of contract after deducting any amount due to Department, shall be refunded to the Bidder without interest after the defects liabilities attached to the contract is over.
15. Negotiation of rates will be made only with the lowest tenderer for reducing the quoted rates.
16. The lowest tenderer will be identified who quotes lowest total tender price which including GST as per the clause Sl.No.9. The Negotiation of rates will be made only with the lowest tenderer for reducing the quoted rates and the negotiation will be made for the rates quoted to the items in the construction part alone and not for GST amount. After negotiation with lowest tenderer, the GST amount will be recalculated at 18% of the sum of the Negotiated tender value (excluding GST) for Construction Cost specified in the BOQ, subject to GST rate applicable from time to time as recommended by the GST council.



17. For every Bill, 18% of GST will be paid to the contractor based on the value of work done for Construction by the contractor. After the payment including 18% of GST, the Contractor should pay the GST Amount to Government through his GST Registration No. Also the contractor needs to submit the Material purchase bill mentioning the name of the works in the package and GST No. to the Department.
18. At the time of payment for first running account bill, the contractor should produce the GST paid details on goods (Materials) to the department along with Input Tax Credit (ITC).
19. At the time of payment for next running account bills, the contractor should produce the GST paid details of services upto previous bill payment (i.e. GST paid detail for the previous work bill) along with Input Tax Credit (ITC) availed at the time of payment of intermediate bill to the department.
20. The contractor should produce the GST paid details for all the materials used for Construction work and GST paid details of services for the upto previous payment (i.e. GST paid detail for the upto previous work bill) to the department along with Input Tax Credit (ITC) availed at the time of payment of final bill to the department.
21. In the final bill, the Goods and Service Tax (GST) amount retained in previous payment has to be released to the contractor without interest.
22. After receipt of final work bill payment for construction, the contractor shall furnish to the department, with the complete GST paid details along with Input Tax Credit (ITC) details within 3 months matched with GSTN (Goods and Service Tax Net work).
23. The rates tendered in the priced Bill of Quantities shall, except in so far as it is otherwise provided under the Contract, including all Constructional plant, labour, supervision, materials, erection, maintenance, insurance, profit, taxes and duties (except GST), together with all general risks, liabilities and obligations set out in the Contract.



**24.** The Contractor should be required to indicate their GST registration number under the Goods and Service Tax (GST) Act 2017 in the tender form. The Central Goods and Service (CGST) Act 2017, the Integrated Goods and Services (IGST) Act 2017 and the Tamil Nadu Goods and Services (TNGST) Act 2017 have been enacted and enforced from 01.07.2017. Under the new tax regime, GST (comprising CGST, SGST and IGST) on works contracts for Government work was finally notified at 12 percent as per the Tamil Nadu Goods and Services (TNGST) Act 2017, with effect from 01.07.2017. **Under the new CBIC notification number 15/2021 (CTR) dated:18.11.2021 by amending principal notification number 11/2017 with effect from 01.01.2022 all the works contract services provided by Government entity are taxable at 18%**

[illegible]





## PCS. OF CORRECTIONS

**CONTRACTOR,**

[illegible]

## U.S. OF CORRECTIONS

**ERINTENDING ENGINEER**  
**TNPHC Ltd**  
**450 MM**  
**SOUTH CIRCLE,**  
**MADURAI-14.**



**PROPOSED FIRST FLOOR**  
**ASS. OF CORRECTIONS**

**CONTRACTOR,**



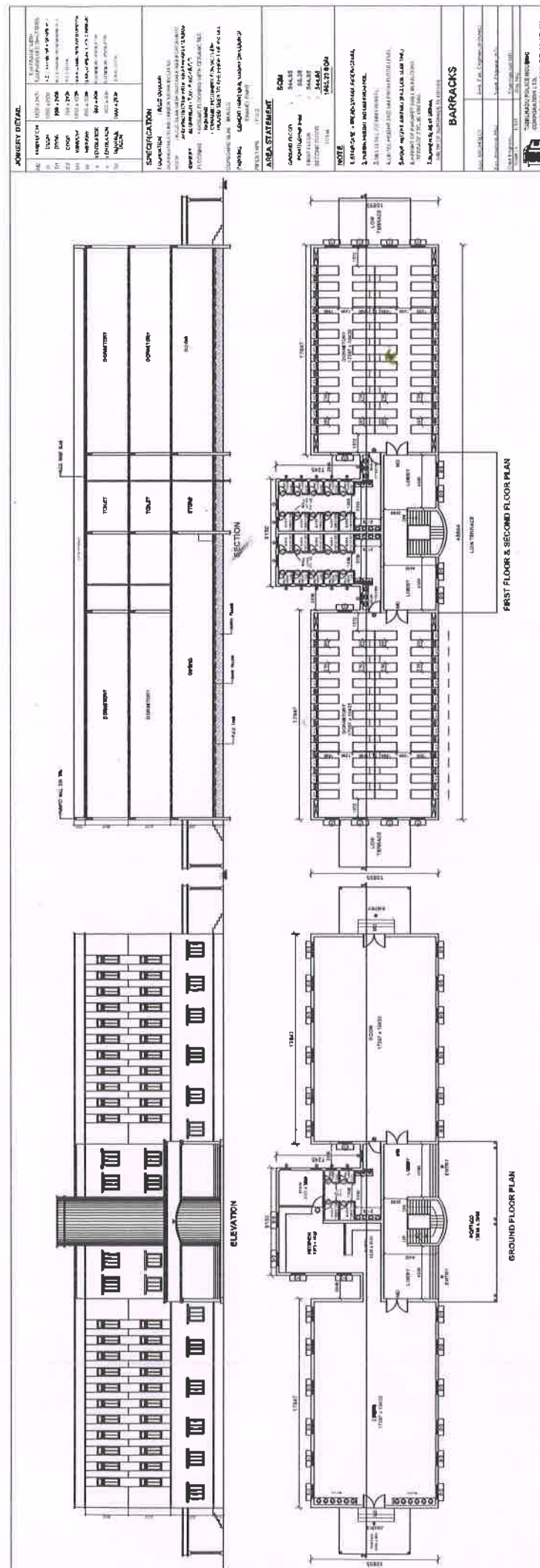
**PROPOSED  
SECOND FLOOR PLAN**

[illegible]

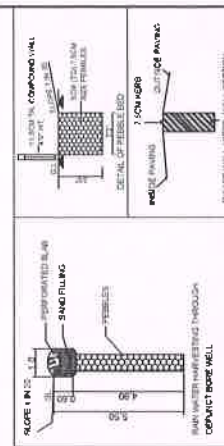
## PROPOSED SECOND FLOOR

**CONTRACTOR**





KEY PLAN  
NOT TO SCALE



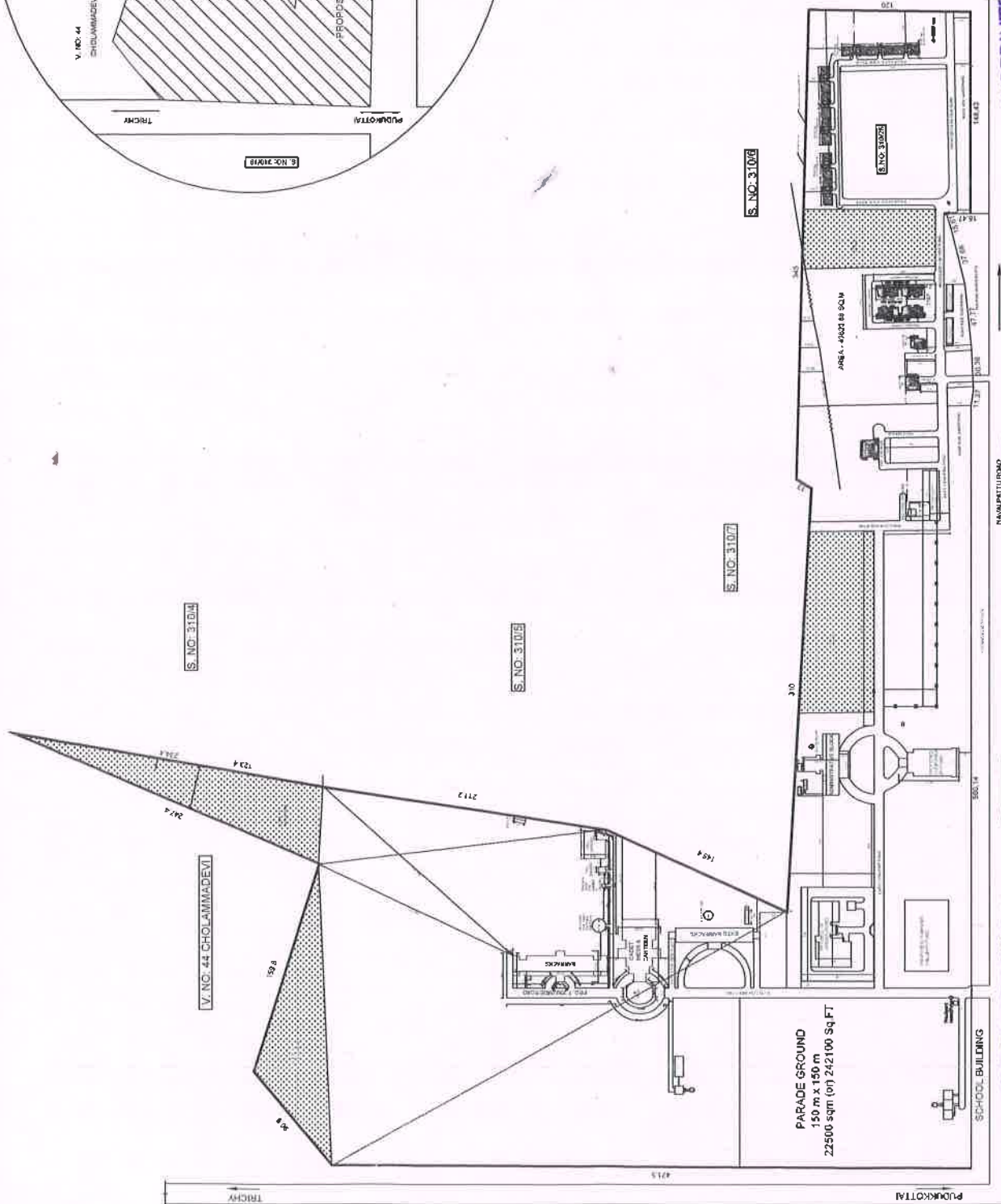
BLD-033 NO.	Q-135 TEMPT	NO. OF BLOODS	NO. OF PLACES	DATE NO.	AREA NO.
1	AP	1	0	2008/05/11	200-000
2	DP	1	0	2008/05/11	200-000
3	WP	1	0	2008/05/11	200-000
4	WP	1	0	2008/05/11	200-000
5	WP	1	0	2008/05/11	200-000
6	WP	1	0	2008/05/11	200-000
7	WP	1	0	2008/05/11	200-000
8	WP	1	0	2008/05/11	200-000
9	WP	1	0	2008/05/11	200-000
10	WP	1	0	2008/05/11	200-000
11	WP	1	0	2008/05/11	200-000
12	WP	1	0	2008/05/11	200-000
13	WP	1	0	2008/05/11	200-000
14	WP	1	0	2008/05/11	200-000
15	WP	1	0	2008/05/11	200-000
16	WP	1	0	2008/05/11	200-000
17	WP	1	0	2008/05/11	200-000
18	WP	1	0	2008/05/11	200-000
19	WP	1	0	2008/05/11	200-000
20	WP	1	0	2008/05/11	200-000
21	WP	1	0	2008/05/11	200-000
22	WP	1	0	2008/05/11	200-000
23	WP	1	0	2008/05/11	200-000
24	WP	1	0	2008/05/11	200-000
25	WP	1	0	2008/05/11	200-000
26	WP	1	0	2008/05/11	200-000
27	WP	1	0	2008/05/11	200-000
28	WP	1	0	2008/05/11	200-000
29	WP	1	0	2008/05/11	200-000
30	WP	1	0	2008/05/11	200-000
31	WP	1	0	2008/05/11	200-000
32	WP	1	0	2008/05/11	200-000
33	WP	1	0	2008/05/11	200-000
34	WP	1	0	2008/05/11	200-000
35	WP	1	0	2008/05/11	200-000
36	WP	1	0	2008/05/11	200-000
37	WP	1	0	2008/05/11	200-000
38	WP	1	0	2008/05/11	200-000
39	WP	1	0	2008/05/11	200-000
40	WP	1	0	2008/05/11	200-000
41	WP	1	0	2008/05/11	200-000
42	WP	1	0	2008/05/11	200-000
43	WP	1	0	2008/05/11	200-000
44	WP	1	0	2008/05/11	200-000
45	WP	1	0	2008/05/11	200-000
46	WP	1	0	2008/05/11	200-000
47	WP	1	0	2008/05/11	200-000
48	WP	1	0	2008/05/11	200-000
49	WP	1	0	2008/05/11	200-000
50	WP	1	0	2008/05/11	200-000
51	WP	1	0	2008/05/11	200-000
52	WP	1	0	2008/05/11	200-000
53	WP	1	0	2008/05/11	200-000
54	WP	1	0	2008/05/11	200-000
55	WP	1	0	2008/05/11	200-000
56	WP	1	0	2008/05/11	200-000
57	WP	1	0	2008/05/11	200-000
58	WP	1	0	2008/05/11	200-000
59	WP	1	0	2008/05/11	200-000
60	WP	1	0	2008/05/11	200-000
61	WP	1	0	2008/05/11	200-000
62	WP	1	0	2008/05/11	20

**SUPERINTENDING ENGINEER**  
**TNPSC Ltd**  
**SOUTH CIRCLE,**  
**MADRAS-14**



TAMILNADU POLICE HOUSING  
CORPORATION LIMITED

115 EVERETT WILPAIN, CHEMIST - 507 010



NOS. OF CORRECTIONS

**CONTRACTOR,**

O.S.R. AREA		28224.9 SQ.M		BLOCK NO.		QTRG. TYPE		NO. OF BLOCKS		NO. OF PLOTS		DRG NO		AREA SQ.M		SITE AREA		202748.60		SOM (50 ACRES)		NAVALPATTU	
O.S.R. AREA REQUIRED 10%		2822.49 SQ.M																				PROPOSED POLICE RESIDENT SCHOOL IN	
O.S.R. 1		4000.0 SQ.M																				SURVEY No. : 31076	
O.S.R. 2		6876.0 SQ.M																				VILLAGE : NAVALPATTU	
O.S.R. 3		6150.0 SQ.M																				TOWNPAUK : THIRUVANMIYUR	
O.S.R. 4		8855.0 SQ.M																				DISTRICT : TIRUPUR	
O.S.R. AREA REQUIRED 10%		2822.49 SQ.M																					

**SOUTH CIRCLE:**

**MADURAI-14:**

REG. NO. 34-254976-14

REG. DATE 08-07-2011

REG. NO. 34-254976-14

REG. DATE 08-07-2011

REG. NO. 34-254976-14

REG. DATE 08-07-2011

NAVALPATTU

PROPOSED POLICE RESIDENT SCHOOL IN

SURVEY No. : 31076

VILLAGE : NAVALPATTU

TOWNPAUK : THIRUVANMIYUR

DISTRICT : TIRUPUR

PLAT COVERAGE : 2.103 %

F.S.I. : 0.05

REG. NO. 34-254976-14

REG. DATE 08-07-2011

REG. NO. 34-254976-14

REG. DATE 08-07-2011

REG. NO. 34-254976-14

REG. DATE 08-07-2011

NAVALPATTU

PROPOSED POLICE RESIDENT SCHOOL IN

SURVEY No. : 31076

VILLAGE : NAVALPATTU

TOWNPAUK : THIRUVANMIYUR

DISTRICT : TIRUPUR

PLAT COVERAGE : 2.103 %

F.S.I. : 0.05

REG. NO. 34-254976-14

REG. DATE 08-07-2011

REG. NO. 34-254976-14

REG. DATE 08-07-2011

REG. NO. 34-254976-14

REG. DATE 08-07-2011

NAVALPATTU

PROPOSED POLICE RESIDENT SCHOOL IN

SURVEY No. : 31076

VILLAGE : NAVALPATTU

TOWNPAUK : THIRUVANMIYUR

DISTRICT : TIRUPUR

PLAT COVERAGE : 2.103 %

F.S.I. : 0.05

REG. NO. 34-254976-14

REG. DATE 08-07-2011

REG. NO. 34-254976-14

REG. DATE 08-07-2011

REG. NO. 34-254976-14

REG. DATE 08-07-2011

NAVALPATTU

PROPOSED POLICE RESIDENT SCHOOL IN

SURVEY No. : 31076

VILLAGE : NAVALPATTU

TOWNPAUK : THIRUVANMIYUR

DISTRICT : TIRUPUR

PLAT COVERAGE : 2.103 %

F.S.I. : 0.05

REG. NO. 34-254976-14

REG. DATE 08-07-2011

REG. NO. 34-254976-14

REG. DATE 08-07-2011

REG. NO. 34-254976-14

REG. DATE 08-07-2011

NAVALPATTU

PROPOSED POLICE RESIDENT SCHOOL IN

SURVEY No. : 31076

VILLAGE : NAVALPATTU

TOWNPAUK : THIRUVANMIYUR

DISTRICT : TIRUPUR

PLAT COVERAGE : 2.103 %

F.S.I. : 0.05

REG. NO. 34-254976-14

REG. DATE 08-07-2011

REG. NO. 34-254976-14

REG. DATE 08-07-2011

REG. NO. 34-254976-14

REG. DATE 08-07-2011

NAVALPATTU

PROPOSED POLICE RESIDENT SCHOOL IN

SURVEY No. : 31076

VILLAGE : NAVALPATTU

TOWNPAUK : THIRUVANMIYUR

DISTRICT : TIRUPUR

PLAT COVERAGE : 2.103 %

F.S.I. : 0.05

REG. NO. 34-254976-14

REG. DATE 08-07-2011

REG. NO. 34-254976-14

REG. DATE 08-07-2011

REG. NO. 34-254976-14

REG. DATE 08-07-2011

NAVALPATTU

PROPOSED POLICE RESIDENT SCHOOL IN

SURVEY No. : 31076

VILLAGE : NAVALPATTU

TOWNPAUK : THIRUVANMIYUR

DISTRICT : TIRUPUR

PLAT COVERAGE : 2.103 %

F.S.I. : 0.05

REG. NO. 34-254976-14

REG. DATE 08-07-2011

REG. NO. 34-254976-14

REG. DATE 08-07-2011

REG. NO. 34-254976-14

REG. DATE 08-07-2011

NAVALPATTU

PROPOSED POLICE RESIDENT SCHOOL IN

SURVEY No. : 31076

VILLAGE : NAVALPATTU

TOWNPAUK : THIRUVANMIYUR

DISTRICT : TIRUPUR

PLAT COVERAGE : 2.103 %

F.S.I. : 0.05

REG. NO. 34-254976-14

REG. DATE 08-07-2011

REG. NO. 34-254976-14

REG. DATE 08-07-2011

REG. NO. 34-254976-14

REG. DATE 08-07-2011

NAVALPATTU

PROPOSED POLICE RESIDENT SCHOOL IN

SURVEY No. : 31076

VILLAGE : NAVALPATTU

TOWNPAUK : THIRUVANMIYUR

DISTRICT : TIRUPUR

PLAT COVERAGE : 2.103 %

F.S.I. : 0.05

REG. NO. 34-254976-14

REG. DATE 08-07-2011

REG. NO. 34-254976-14

REG. DATE 08-07-2011

REG. NO. 34-254976-14

REG. DATE 08-07-2011

NAVALPATTU

PROPOSED POLICE RESIDENT SCHOOL IN

SURVEY No. : 31076

VILLAGE : NAVALPATTU

TOWNPAUK : THIRUVANMIYUR

DISTRICT : TIRUPUR

PLAT COVERAGE : 2.103 %

F.S.I. : 0.05

REG. NO. 34-254976-14

REG. DATE 08-07-2011

REG. NO. 34-254976-14

REG. DATE 08-07-2011

REG. NO. 34-254976-14

REG. DATE 08-07-2011

NAVALPATTU

PROPOSED POLICE RESIDENT SCHOOL IN

SURVEY No. : 31076

VILLAGE : NAVALPATTU

TOWNPAUK : THIRUVANMIYUR

DISTRICT : TIRUPUR

PLAT COVERAGE : 2.103 %

F.S.I. : 0.05

REG. NO. 34

# **BOOKLET : 4**

**TENDER CODING SHEET (BOQ)**

**CONTAINS PAGES : (18 PAGES)**

**(RATES TO BE FILLED UP BY THE  
TENDERER IN THIS CODING SHEET)**